

Appendix 1.1

Part-A: Structure and Form of Government Accounts *(Reference: Paragraph 1.1 Page 1)*

Structure of Government Accounts: The accounts of the State Government are kept in three parts (i) Consolidated Fund, (ii) Contingency Fund and (iii) Public Account.

Part I: Consolidated Fund

All revenues received by the State Government, all loans raised by issue of treasury bills, internal and external loans and all moneys received by the Government in repayment of loans shall form one consolidated fund entitled 'The Consolidated Fund of State' established under Article 266(1) of the Constitution of India.

Part II: Contingency Fund

Contingency Fund of State established under Article 267(2) of the Constitution is in the nature of an imprest placed at the disposal of the Governor to enable him to make advances to meet urgent unforeseen expenditure, pending authorisation by the Legislature. Approval of the Legislature for such expenditure and for withdrawal of an equivalent amount from the Consolidated Fund is subsequently obtained, whereupon the advances from the Contingency Fund are recouped to the Fund.

Part III: Public Account

Receipts and disbursements in respect of certain transactions such as small savings, provident funds, reserve funds, deposits, suspense, remittances, etc. which do not form part of the Consolidated Fund, are kept in the Public Account set up under Article 266(2) of the Constitution and are not subject to vote by the State legislature.

PART-B
Layout of Finance Accounts
(Reference: Paragraph 1.1; Page 1)

Statement	Lay Out
Statement No.1	Presents the summary of transactions of the State Government—receipts and expenditure, revenue and capital, public debt receipts and disbursements etc in the Consolidated Fund, Contingency Fund and Public Account of the State.
Statement No.2	Contains the summarized statement of capital outlay showing progressive expenditure to the end of 2007-08.
Statement No.3	Gives financial results of irrigation works, their revenue receipts, working expenses and maintenance charges, capital outlay, net profit or loss, etc.
Statement No.4	Indicates the summary of debt position of the State which includes borrowing from intern debt, Government of India, other obligations and servicing of debt.
Statement No. 5	Gives the summary of loans and advances given by the State Government during the year repayments made, recoveries in arrears etc.
Statement No.6	Gives the summary of guarantees given by the Government for repayment of loans etc. raised by the statutory corporations, local bodies and other institutions.
Statement No.7	Gives the summary of cash balances and investments made out of such balances.
Statement No.8	Depicts the summary of balances under Consolidated Fund, Contingency Fund and Public Account as on 31 March 2008
Statement No.9	Shows the revenue and expenditure under different heads for the year 2007-08 as a percentage of total revenue/ expenditure
Statement No.10	Indicates the distribution between the charged and voted expenditure incurred during the year.
Statement No.11	Indicates the detailed account of revenue receipts by minor heads.
Statement No.12	Provides accounts of revenue expenditure by minor heads under non–plan and plan separately and capital expenditure by major head wise.
Statement No.13	Depicts the detailed capital expenditure incurred during and to the end of 2007-08.
Statement No.14	Shows the details of investment of the State Government in statutory corporations, Government companies, other joint stock companies, co-operative banks and societies etc up to the end of 2007-08.
Statement No.15	Depicts the capital and other expenditure to the end of 2007-08 and the principal sources from which the funds were provided for that expenditure.
Statement No.16	Gives the detailed account of receipts disbursements and balances under heads of account relating to Debt, Contingency Fund and Public Account.
Statement No.17	Presents detailed account of debt and other interest bearing obligations of the Government of Uttar Pradesh.
Statement No.18	Provides the detailed account of loans and advances given by the Government of Uttar Pradesh, the amount of loan repaid during the year, the balance as on 31 March 2008.
Statement No.19	Gives the details of earmarked balances of reserve funds.

Part-C
List of terms used in the Chapter I and basis of their calculation
(Reference: Paragraph 1.2 Page 3)

Terms	Basis of calculation
Buoyancy of a parameter	Rate of Growth of the parameter/ GSDP Growth
Buoyancy of a parameter (X) With respect to another parameter (Y)	Rate of Growth of parameter (X)/ Rate of Growth of parameter (Y)
Rate of Growth (ROG)	$[(\text{Current year Amount} / \text{Previous year Amount}) - 1] * 100$
Development Expenditure	Social Services + Economic Services
Average interest paid by the State	Interest payment / [(Amount of previous year's Fiscal Liabilities + Current year's Fiscal Liabilities) / 2] * 100
Interest spread	GSDP growth – Weighted Interest Rate
Quantum spread	Debt stock * Interest spread
Interest received as per cent to Loans Outstanding	Interest Received [(Opening balance + Closing balance of Loans and Advances) / 2] * 100
Revenue Deficit	Revenue Receipt – Revenue Expenditure
Fiscal Deficit	Revenue Expenditure + Capital Expenditure + Net Loans and Advances – Revenue Receipts – Miscellaneous Capital Receipts
Primary Deficit	Fiscal Deficit – Interest payments
Balance from Current Revenue (BCR)	Revenue Receipts <u>minus</u> all Plan grants and Non- plan Revenue Expenditure excluding expenditure recorded under the major head 2048 – Appropriation for reduction of Avoidance of debt

Appendix – 1.2

(Reference: Paragraphs: 1.2 & 1.7; page 3 and 22)

Summarized Financial Position of the Government of Uttar Pradesh as on
31 March 2008

(Rupees in crore)

As on 31.3.2007	Liabilities		As on 31-3-2008
82046.26	Internal Debt		86,577.29
31067.19	Market Loans bearing interest	33,389.50	
(-) 480.05	Market loans not bearing interest	(-)174.30	
(-) 17.70	Loans from LIC	(-)24.30	
9141.36	Loans from other Institutions	9,628.37	
42366.15	Special Securities issued	43,788.71	
(-) 30.69	Ways and Means Advance from RBI	(-)30.69	
21963.69	Loans and Advances from Central Government		21,142.49
9.96	Pre 1984-85 Loans	9.96	
138.13	Non-Plan Loans	130.29	
21522.46	Loans for State Plan Schemes	20,715.97	
1.16	Loans for Central Plan Schemes	1.06	
290.55	Loans for Centrally sponsored Plan Schemes	283.78	
1.43	Ways and Means Advances from Central Government	1.43	
19963.11	Small Savings, Provident Funds, etc.		22,414.46
15957.53	Deposit		18,641.39
22225.39	Reserve Funds		25,472.17
-	Deposit with Reserve Bank		--
162155.98	Total		1,74,247.80
As on 31 March 2007	Assets		As on 31 March 2008
72205.26	Gross Capital Outlay on Fixed Assets		89,155.64
16592.19	Investments in shares of companies Corporation, etc.	21,877.47	
55613.07	Capital Outlays	67,278.17	
8691.49	Loans and advances		8,984.84
3160.89	Loans for Power Projects	3,160.89	
5639.97	Other Development Loans	5,903.66	
(-) 109.37	Loans to Government Servants & Miscellaneous loans	(-)79.71	
140.80	Contingency Fund		(-)346.26
45.19	Reserve Fund Investments		45.19
7.03	Advance		7.50
(-)2931.31	Suspense and Miscellaneous Balances		(-)3,586.54
78.57	Remittance balances		(-)194.54
15487.88	Cash		15,200.16
6.34	Cash in Treasuries and Local Remittances	(-)3.66	
6.86	Deposit with Reserve Bank	241.88	
15.27	Departmental Cash Balances	16.03	
0.34	Permanent Advances	0.35	
15459.07	Cash Balance Investments	14,945.56	
68431.07	Deficit on Government Accounts		64,981.81
(-) 4900.62	(i) Revenue Deficit of the Current Year	(-)3,449.26	
73331.69	(ii) Accumulated deficit	68,431.07	
162155.98	Total		1,74,247.80

Appendix -1.3
(Reference: Paragraph 1.2; page 3)
Abstract of Receipts and Disbursements for the year 2007-08
(Rupees in crore)

Receipts			Disbursements				
2006-07	Section A- Revenue	2007-08	2006-07		Non-plan	Plan	Total 2007-08
60,599.52	I-Revenue Receipts	68,672.47	55,698.90	I-Revenue Expenditure	53,479.29	11,743.92	65,223.21
22,997.97	Tax-Revenue	24,959.32	24,299.32	General Services	26,457.90	92.85	26,550.75
6,532.64	Non-Tax Revenue	5,816.01	19,248.06	Social Services	14,871.87	8,213.70	23,085.57
23,218.31	State's Share of Union Taxes	29,287.74	10,704.44	Education, Sports, Art and Culture	9,232.24	2,443.44	11,675.68
2,693.80	Non-Plan Grants	2,894.42	2,820.16	Health and Family Welfare	2,288.03	813.69	3,101.72
2,837.57	Grants for State Plan Scheme	2,795.49	1,188.37	Water supply, Sanitation, Housing and Urban Development	224.38	1,744.24	1,968.62
2,319.23	Grants for Central and Centrally Sponsored Scheme	2,919.49	27.26	Information and Broadcasting	28.44	0.55	28.99
			1,502.05	Welfare of Scheduled Caste, Scheduled Tribes and Other Backward Classes	1,223.28	751.11	1,974.39
			520.42	Labour and Labour Welfare	134.15	27.21	161.36
			2,455.00	Social Welfare and Nutrition	1,708.73	2,433.46	4,142.19
			30.36	Others	32.62	--	32.62
			9,409.27	Economic Services	8,600.06	3,437.34	12,037.40
			1,848.72	Agriculture and Allied Activities	1,300.00	1,222.06	2,522.06
			1,974.24	Rural Development	1,482.14	1,454.13	2,936.27
			83.50	Special Area Programme	25.00	28.70	53.70
			1,919.72	Irrigation and Flood Control	2,065.66	345.29	2,410.95
			232.43	Industry and Minerals	305.62	332.54	638.16
			1,869.80	Energy	1,907.69	6.42	1,914.11
			1,335.07	Transport	1,395.27	8.35	1,403.62
			22.66	Science, Technology and Environment	4.43	30.71	35.14
			123.13	General Economic Services	114.25	9.14	123.39
			2,742.25	Grants-in-aid Contribution	3,549.46	0.03	3,549.49
	II-Revenue Deficit carried over to Section-B		4,900.62	II-Revenue surplus carried over to Section-B			3,449.26
60,599.52	Total	68,672.47	60,599.52	Total			68,672.47
	Section -B- Others						
8,494.69	III-Opening Cash Balance including Permanent Advances and Cash Balance Investment	15,487.88		III-Opening Overdraft from RBI			
	IV-Miscellaneous Capital Receipts		13,984.13	IV-Capital Outlay	3,230.54	13,719.84	16,950.38
			653.81	General Services	318.16	256.73	574.89
			2,179.83	Social Services	101.45	2,012.18	2,113.63
			297.33	Education, Sport, Art and Culture	13.97	638.77	652.74
			1,481.67	Health and Family Welfare	8.76	1,066.07	1,074.83
			319.04	Water supply, Sanitation, Housing and Urban Development	78.29	162.03	240.32
			--	Information and Broadcasting	-	--	--
			34.82	Welfare of Scheduled Castes, Scheduled Tribes and Other Backward Classes	--	100.28	100.28
			5.87	Social Welfare and Nutrition	0.05	5.50	5.55
			41.10	Others	0.38	39.53	39.91
			11,150.49	Economic Services	2,810.93	11,450.93	14,261.86
			(-) 151.52	Agriculture and Allied Activities	712.78	322.63	1,035.41
			505.25	Rural Development	9.56	671.30	680.86
			718.93	Special Area Programmes	143.63	545.86	689.49
			2,373.13	Irrigation and Flood Control	0.54	2,191.54	2,192.08
			3,083.75	Energy	1,815.78	3,401.13	5,216.91
			13.89	Industry and Minerals	--	25.44	25.44
			4,557.30	Transport	128.64	4,253.18	4,381.82
			-	Science Technology and Environment Services	--	--	--
			49.76	General Economic Services	--	39.85	39.85

Audit Report (Civil) for the year ended 31 March 2008

2006-07	Receipts	2007-08	2006-07	Disbursements		2007-08
355.64	V-Recoveries of Loans and Advances	448.61	887.55	V-Loans and Advances Disbursed		741.96
179.18	From Industry and Minerals	289.11	339.31	For Industry and Minerals	362.28	
-	From Power Project	--	35.00	For Power Projects	--	
30.56	From Government Servants	37.68	64.85	To Government Servants	67.34	
145.90	From Others	121.82	448.39	To Others	312.34	
4,900.62	VI-Revenue Surplus brought down	3,449.26	--	VI-Revenue Deficit brought down	--	
11,711.50	VII-Public Debt Receipts	9,078.70	5,912.08	VII-Repayment of Public Debt		5,368.87
11,332.02	Internal Debt other than WMA and Overdrafts	8,709.73	3,737.72	Internal Debt other than WMA and Overdrafts	4,178.70	
-	Net Transactions under WMA (RBI)	--	-	Net Transactions under WMA (RBI)	--	
379.48	Loans and Advances from GOI other than WMA	368.97	2,174.36	Loans and Advances from GOI	1,190.17	
	WMA from GOI	--	-	WMA (GOI)	--	
-	VIII-Appropriation to Contingency Fund	--		VIII-Appropriation to Contingency Fund		
644.79	IX-Amount transferred to Contingency Fund	603.78	9.57	IX-Expenditure from Contingency Fund		116.72
63,075.25	X-Public Account Receipts	77,870.18	52,901.28	X-Public Accounts Disbursements		68,560.32
4,857.91	Small Savings, Provident Funds etc.	5,312.06	2,125.22	Small Savings, Provident Funds etc.	2,860.70	
3,073.80	Reserve Funds	4,019.02	111.87	Reserve Funds	772.24	
27,430.54	Suspense and Miscellaneous	35,808.00	25,151.70	Suspense and Miscellaneous	35,152.78	
12,463.56	Remittances	13,280.85	12,056.81	Remittances	13,007.74	
15,249.44	Deposits and Advances	19,450.25	13,455.68	Deposits and Advances	16,766.86	
	XI-Closing Overdraft from RBI		15,487.88	XI-Cash Balance at end		15,200.16
			0.01	Cash in Treasuries and Local Remittances	--	
			6.86	Deposits with Reserve Bank	241.88	
			15.61	Departmental Cash Balances including Permanent Advances	16.38	
			15,459.07	Cash Balance Investments	14,945.56	
			6.33	Remittance in Transit	(-)3.66	
89,182.49	Total	1,06,938.41	89,182.49	Total		1,06,938.41

Appendix -1.4
(Reference: Paragraph 1.2; page 3)

Sources and Application of Funds for the year 2007-08

		(Rupees in crore)	
2006-07	Sources		2007-08
60599.52	Revenue Receipts		68,672.47
355.64	Recoveries of Loans and Advances		448.61
5799.42	Increase in Public debt		3,709.83
2741.75	- Market loans bearing interest	2,322.30	
(-) 522.81	- Market loans not bearing interest	305.75	
(-) 6.92	- Loans from LIC	(-)6.60	
5382.28	- Loans from other institutions	1,909.58	
----	- Ways and Means Advances (RBI)	--	
(-) 1794.88	Loans and Advances from Central Government.	(-)821.20	
----	- Pre 1984-85 loans	--	
(-) 7.26	- Non-Plan loans	(-)7.84	
(-) 1776.45	- Loans for State Plan Scheme	(-)806.49	
(-) 0.10	- Loans for Central Plan Scheme	(-)0.10	
(-) 11.06	- Loans for Centrally Sponsored Plan Scheme	(-)6.77	
----	- Ways and Means Advances from GOI	--	
10173.97	Net receipts from Public Account		9,309.86
2732.69	- Increase in Small Savings	2,451.36	
1793.76	- Increase in Deposits & Advances	2,683.39	
2961.93	- Increase in Reserve Funds	3,246.78	
2278.84	- Net effect of Suspense and Miscellaneous transactions	655.22	
406.75	- Net effect of Remittance transactions	273.11	
635.22	Net effect of Contingency Fund transactions		487.06
77563.77	Total		82,627.83
2006-07	Application		2007-08
55698.90	Revenue Expenditure		65,223.21
887.55	Lending for developing and other purposes		741.96
13984.13	Capital Expenditure		16,950.38
----	Net effect of Contingency Fund transactions		--
6993.19	Increase in closing cash balance		(-)287.72
77563.77	Total		82,627.83

1. The abridged accounts in the foregoing statements have to be read with comments and explanations in the Finance Accounts.
2. Government accounts being mainly on cash basis, the deficit on Government account, as shown in Statement-I indicates the position on cash basis, as opposed to accrual basis in commercial accounting. Consequently, items payable or receivable or items like depreciation or variation in stock figures etc. do not figure in accounts.
3. Suspense and miscellaneous balances include cheques issued but not paid, payments made on behalf of the State and other pending settlement etc.

Appendix -1.5
(Reference: Paragraph 1.2 & 1.3; page 3 and 7)

Time Series Data on the Finances of Uttar Pradesh

(Rupees in crore)

	2002-03	2003-04	2004-05	2005-06	2006-07	2007-08
Part A. Receipts						
1. Revenue Receipts	27,821	31,638	37,617	45,349	60,600	68,672
(i) Tax Revenue	12,767(46)	13,601(43)	15,693(42)	18,858(42)	22,998 (38)	24,959(36)
Sales Tax/Trade Tax	7,124(56)	7,684(56)	8,888(57)	11,285(60)	13,279 (58)	15,023(60)
State Excise	2,555(20)	2,472(18)	2,686(17)	3,089(16)	3,551 (15)	3,948(16)
Taxes on vehicles	619(5)	677(5)	776(5)	965(5)	1,018 (4)	1,146(05)
Stamps and Registration fees	2,079(16)	2,296(17)	2,682(17)	2,997(16)	4,514 (20)	3,977(16)
Land Revenue	64(1)	118(1)	102(1)	109(1)	188 (1)	393(01)
Other Taxes	326(2)	354(3)	559(3)	413(2)	448 (2)	472(02)
(ii) Non- Tax Revenue	1,913(7)	2,282(7)	2,720(7)	2,930(6)	6,533 (11)	5,816(08)
(iii) State's share in union taxes	10,832(39)	13,273(42)	15,055(40)	18,203(40)	23,218 (38)	29,288(43)
(iv) Grants-in-aid from GOI	2,309(8)	2,482(8)	4,149(11)	5,358(12)	7,851 (13)	8,609(13)
2. Miscellaneous Capital Receipts	---	----	----	----	----	----
3. Total Revenue and Non Debt Capital Receipts (1+2)	27,821	31,638	37,617	45,349	60,600	68,672
4. Recoveries of Loans and Advances	219	12,498	278	585	356	449
5. Public Debt Receipts	12,390	22,110	17,463	14,257	11,711	9,079
Internal Debt (Excluding Ways and Means Advances and Overdrafts)	9,282(75)	19,029(86)	14,597(84)	13,931(98)	11,332 (97)	8,710(96)
Net Transactions under Ways and Means Advances and Overdraft	---	----	25(0)	----	-----	-----
Loans and Advances from Government of India	3,108(25)	3,081(14)	2,841(16)	326(2)	379 (3)	369(04)
6. Total Receipts in the Consolidated Fund (3+4+5)	40,430	66,246	55,358	60,191	72,667	78,200
7. Contingency Fund Receipts	---	52	76	299	645	604
8. Public Account Receipts	37,327	46,875	45,213	52,529	63,075	77,870
9. Total Receipts of the State (6+7+8)	77,757	1,13,173	1,00,647	1,13,019	1,36,387	1,56,674
Part B. Expenditure						
10. Revenue Expenditure	32,939(88)	50,221(83)	44,610(88)	46,617(83)	55,699 (79)	65,223(79)
Plan	3,575(11)	3,276(7)	5,098(11)	6,445(14)	9,699 (17)	11,744(18)
Non Plan	29,364(89)	46,945(93)	39,512(89)	40,172(86)	46,000 (83)	53,479(82)
General Services (incl. Interest payments)	15,583(47)	19,540(39)	22,761(51)	20,919(45)	24,300 (44)	26,551(41)
Economic Services	5,883(18)	18,970(38)	6,976(16)	7,756(17)	9,409 (17)	12,037(18)
Social Services	10,308(31)	10,354(21)	13,090(29)	15,610(33)	19,248 (35)	23,086(35)
Grants in aid and contributions	1,165(4)	1,357(3)	1,783(4)	2,332(5)	2,742(5)	3,549(6)
11. Capital Expenditure	3,794(10)	9,320(15)	5,653(11)	8,711(16)	13,984 (20)	16,950(20)
Plan	3,361(89)	3,437(37)	4,618(82)	8,172(94)	13,312 (95)	13,720(81)
Non Plan	433(11)	5,883(63)	1,035(18)	539(6)	672 (5)	3,230(19)
General Services	330(9)	224(2)	255(4)	313(4)	654 (5)	575(3)
Economic Services	3,176(84)	8,767(94)	4,902(87)	7,239(83)	11,150 (80)	14,262(84)
Social Services	288(7)	329(4)	496(9)	1,159(13)	2,180 (15)	2,113(13)
12. Disbursement of Loans and Advances	804(2)	1,,242(2)	629(1)	684(1)	888 (1)	742(1)
13. Total (10+11+12)	37,537	60,783	50,892	56,012	70,571	82,915
14. Repayments of Public Debt	6,226	8,988	9,157	5,252	5,912	5,369
Internal Debt (excluding Ways and Means Advances and Overdrafts)	1,811(29)	2,300(26)	2,903(32)	4,045(7)	3,738 (63)	4,179(78)
Net Transactions Under Ways and Mean. Advances and Overdraft	777(12)	----	----	25(0)	----	-----
Loans and Advances from Government of India	3,638(59)	6,688(74)	6,254(68)	1,182(23)	2,174 (37)	1,190(22)
15. Appropriation to Contingency Fund	---	---	----	----	----	----
16. Total Disbursement out of Consolidated Fund (13+14+15)	43,763	69,771	60,049	61,264	76,483	88,284
17. Contingency Fund Disbursements	69	85	43	183	10	117
18 Public Account Disbursements	34,359	43,480	40,262	43,172	52,901	68,560
19. Total Disbursement by the State (16+17+18)	78,191	1,13,336	1,00,354	1,04,619	1,29,394	1,56,961

Part C. Deficits						
20. Revenue Deficit (-)/ Surplus (+) (1-10)	(-) 5,118	(-) 18,583	(-) 6,993	(-) 1,268	(+) 4,901	(+)3,449
21. Fiscal Deficit (3+4-13)	9,497	16,647	12,997	10,078	9,615	13,794
22. Primary Deficit (-)/ Surplus (+) (21-23)	(-) 2,437	(-) 6,523	(-) 1,124	(-) 980	(+) 862	(-)2,974
Part D. Other data						
23. Interest Payments (included in Revenue expenditure)	7060	10,124	11,873	9,098	10,477	10,820
24. Arrears of Revenue (percentage Tax & Non- Tax Rev. Receipt)	5,891(40) ¹	6,376(40)	7,922(43)	8,772(40)	14,935(51)	11,659(38)
25. Financial Assistance to local bodies etc.	759	2,835	3,540	4,960	8,034	14,831.93
26. Ways and Means Advances and Overdrafts (days)	203	247	256	41	Nil	Nil
27. Interest on Way and Means & Advance / Overdraft	33	44	49	5	Nil	Nil
28. Gross State Domestic Product (GSDP) (at current price)	2,07,103	2,27,086	2,46,618	2,79,762	3,12,832 ²	3,47,671 ³
29. Outstanding Debt (year end)	1,02,485	1,19,240	1,31,401	1,48,868	1,62,156	1,74,248
30. Outstanding Guarantees (year end)	6,270	3,601	10,354	8,433	11,056	12,736
31. Maximum Amount Guaranteed (year end)	10,840	10,549	22,770	15,073	12,235	18,144
32. Number of incomplete projects	27	24	35	27	58	53
33. Capital blocked in incomplete projects	2,073	2,336	5,804	3,551	5,407	5,863
34. Revenue Buoyancy of Own Taxes	2.708	0.677	1.788	1.501	1.857	0.766

¹ Includes Trade Tax and Entertainment Tax only. Figures of other were not available.

² Figure of GSDP for 2006-07 is quick.

³ Figure of GSDP for 2007-08 is advance.

Appendix 1.6
(Reference: Paragraph 1.2.2; Page 5)
Outcome Indicators of the State's Own Fiscal Correction Path

(Rs. in crore)

Items	2003-04 Actual	2004-05 Pre-Actual	2005-06 B.E.	2005-06	2006-07	2007-08	2008-09	2009-10	2005-10 Total
1	2	3	4	5	6	7	8	9	10
A. STATE REVENUE ACCOUNT									
1. Own Tax Revenue	13601.22	15684.50	18290.58	19780.00	22640.00	25913.52	29660.36	33948.95	131942.83
2. Own Non-Tax Revenue	2282.08	2718.86	2247.19	2247.19	2641.90	2782.47	2931.74	3090.27	13693.57
3. Own Tax + Non-Tax Revenue(1+2)	15883.30	18403.36	20537.77	22027.19	25281.90	28695.99	32592.10	37039.22	145636.40
4. Share in Central Taxes & Duties	13272.97	14724.65	17046.23	18306.23	20167.93	23141.59	26612.77	30671.38	118899.90
5. Plan Grants	1912.47	3721.82	3848.46	3712.91	4046.84	4414.17	4818.22	5262.79	22254.83
6. Non -Plan Grants	569.22	317.12	1235.15	2019.45	3101.49	3232.02	3375.57	3533.47	15262.00
7. Total Central Transfer (4 to 6)	15754.66	18763.59	22129.84	24038.59	27316.26	30787.78	34806.56	39467.54	156416.73
8. Total Revenue (3+7)	31637.96	37166.95	42667.61	46065.78	52598.16	59483.77	67398.66	76506.76	302053.13
9. Plan Expenditure	3275.97	5016.97	7090.44	5641.91	6283.03	6996.64	7791.35	8676.71	35389.64
10. Non -Plan Expenditure	34667.75	39612.59	40980.64	44021.08	47972.97	53599.48	58408.66	64170.77	268172.96
11. Salary Expenditure	12444.82	13679.64	16012.45	15380.20	16303.01	17281.19	18318.06	19417.14	86699.59
12. Pension	2900.10	3591.28	4149.58	4727.53	5021.87	5336.60	5673.30	6033.50	26792.80
13. Interest Payments	10123.60	11865.24	10792.08	10092.00	11299.00	12383.00	13630.00	14888.00	62292.00
14. Subsidies -General	105.89	117.43	129.17	129.17	142.09	156.30	171.93	189.12	788.61
15. Subsidies-Power	935.00	1001.80	1287.00	1251.80	1501.80	1700.00	1700.00	1700.00	7853.60
16. Total Revenue Expenditure (9+10)	37943.72	44629.56	48071.08	49662.99	54256.00	60596.12	66200.01	72847.48	303562.60
17. Salary + Interest+ Pension (11+12+13)	25468.52	29136.16	30954.11	30199.71	32623.88	35000.79	37621.36	40338.64	175784.39
18. As% of Revenue Receipts (17/8)	80.50	78.39	72.55	65.56	62.02	58.84	55.82	52.73	58.20
19. Revenue Surplus/Deficit (8-16)	-6305.76	-7462.60	-5403.47	-3597.21	-1657.84	-1112.35	1198.65	3659.28	-1509.47
20. Outstanding Debts	106407.04	119926.10	129154.91	132311.50	144056.28	155781.36	166610.87	177228.00	775988.01
B. CONSOLIDATED REVENUE ACCOUNT									
1. Power Sector loss/profit net of actual subsidy transfer	1083.00	2108.00	2186.00	2186.00	2152.00	1776.00	1208.00	418.00	7740.00
2. Increase in debtors during the year in power utility accounts [Increase(-)]	1070.00	1180.00	1170.00	1170.00	1031.00	854.00	617.00	309.00	3981.00
3. Interest payments on off budget borrowing and SPV borrowings made by PSU/SPUs outside budget	521.77	517.26	531.12	531.12	594.18	743.00	827.14	862.77	3558.21
4. Total (1 to 3)	2674.77	3805.26	3887.12	3887.12	3777.18	3373.00	2652.14	1589.77	15279.21
5. Consolidated Revenue Deficit (A19+B4)	8980.53	11267.87	9290.59	7484.33	5435.02	4485.35	1453.49	-2069.51	16788.68
C. CONSOLIDATED DEBT									
1. Outstanding Debts & Liabilities	107490.04	122034.10	131340.91	134497.50	146208.28	157557.36	1678183.87	177646.00	783728.01
2. Total Outstanding guarantee of which (a) guarantee on account off budgeted borrowing and SPV borrowing	10354.32	11154.32	11954.32	11954.32	12754.32	13544.32	14354.32	15154.32	67771.60
D. CAPITAL ACCOUNT:									
1. Capital Outlay	3448.52	5652.10	7897.91	9154.47	9769.92	10278.31	11675.73	13905.41	54783.84
2. Disbursement of Loans and Advances	1242.37	681.98	592.71	710.52	714.68	771.85	833.60	900.29	3930.94
3. Recovery of Loans and Advances	220.36	277.63	361.51	1076.80	397.66	437.43	481.17	529.29	2922.35
4. Other Capital Receipts	38540.58	37688.77	24464.98	26492.19	21818.14	21631.10	21277.25	20834.14	112052.82
E. GROSS FISCAL DEFICIT (GFD)	10776.29	13519.06	13532.58	12385.40	11744.78	11725.08	10829.91	10617.13	57301.90
1. GSDP (Rs. Crore) at current prices	217673.14	229413.80	256943.46	256943.46	287776.67	322309.87	360987.06	404305.50	1632322.56
2. Actual/Assumed Nominal Growth Rate (%)	---	---	---	12.00	12.00	12.00	12.00	12.00	---
3. Total Expenditure	42414.25	50686.01	56200.19	58451.18	64342.94	71208.85	78228.17	87123.89	359355.03

Excluding Rs. 12277.40 crore (UPSEB write off amount)

Including salary (Grant-in-aid) for Teachers and Non-teaching staff of the Aided Educational Institutions
Rs. 5871.83 crore of Power Bonds.

Items	2003-04 Actual	2004-05 Pre-Actual	2005-06 B.E.	2005-06	2006-07	2007-08	2008-09	2009-10	2005-10 Total
1	2	3	4	5	6	7	8	9	10
1. Own Tax Revenue as %ge of GSDP	6.25%	6.84%	7.12%	7.70%	7.87%	8.04%	8.22%	8.40%	8.08%
2. Own Non-Tax Revenue as %ge of GSDP	1.05%	1.19%	0.87%	0.87%	0.92%	0.86%	0.81%	0.76%	0.84%
3. Own Tax + Non-Tax Revenue as %ge of GSDP	7.30%	8.02%	7.99%	8.57%	8.79%	8.90%	9.03%	9.16%	8.90%
4. Share in Central Taxes & Duties as %ge of GSDP	6.10%	6.42%	6.63%	7.12%	7.01%	7.18%	7.37%	7.59%	7.28%
5. Plan Grants as %ge of GSDP	0.88%	1.62%	1.50%	1.45%	1.41%	1.37%	1.33%	1.30%	1.36%
6. Non -Plan Grants as %ge of GSDP	0.26%	0.14%	0.48%	0.79%	1.08%	1.00%	0.93%	0.87%	0.93%
7. Total Central Transfer as %ge of GSDP	7.24%	8.18%	8.61%	9.36%	9.49%	9.55%	9.64%	9.76%	9.58%
8. Total Revenue Receipts as %ge of GSDP	14.53%	16.20%	16.61%	17.93%	18.28%	18.46%	18.67%	18.92%	18.50%
9. Plan Expenditure as %ge of GSDP	1.50%	2.19%	2.76%	2.20%	2.18%	2.17%	2.16%	2.15%	2.17%
10. Non -Plan Expenditure as %ge of GSDP	15.93%	17.27%	15.95%	17.13%	16.67%	16.63%	16.18%	15.87%	16.43%
11. Salary Expenditure as %ge of GSDP	5.72%	5.96%	6.23%	5.99%	5.67%	5.36%	5.07%	4.80%	5.21%
12. Pension as %ge of GSDP	1.33%	1.56%	1.61%	1.84%	1.75%	1.66%	1.57%	1.49%	1.64%
13. Interest Payments as %ge of GSDP	4.65%	5.17%	4.20%	3.93%	3.93%	3.84%	3.78%	3.68%	3.82%
14. Subsidies-General as %ge of GSDP	0.05%	0.05%	0.05%	0.05%	0.05%	0.05%	0.05%	0.05%	0.05%
15. Subsidies-Power as %ge of GSDP	0.43%	0.44%	0.50%	0.49%	0.52%	0.53%	0.47%	0.42%	0.48%
16. Total Revenue Expenditure as %ge of GSDP	17.43%	19.45%	18.71%	19.33%	18.85%	18.80%	18.34%	18.02%	18.60%
17. Salary + Interest+ Pension as %ge of GSDP	11.70%	12.70%	12.05%	11.75%	11.34%	10.86%	10.42%	9.98%	10.77%
18. Revenue Surplus/Deficit as %ge of GSDP	-2.90%	-3.25%	-2.10%	-1.40%	-0.58%	-0.35%	0.33%	0.51%	-0.09%
19. Capital Outlay as %ge of GSDP	1.58%	2.46%	3.07%	3.56%	3.39%	3.19%	3.23%	3.44%	3.36%
20. Disbursement of Loans and Advances as %ge of GSDP	0.58%	0.30%	0.23%	0.28%	0.25%	0.24%	0.23%	0.22%	0.24%
21. Recovery of Loans and Advances as %ge of GSDP	0.10%	0.12%	0.14%	0.42%	0.14%	0.14%	0.13%	0.13%	0.18%
22. Other Capital Receipts as %ge of GSDP	17.71%	16.43%	9.52%	10.31%	7.58%	6.71%	5.89%	5.15%	6.86%
23. GFD as %ge of GSDP	4.95%	5.89%	5.27%	4.82%	4.08%	3.64%	3.00%	2.63%	3.51%
24. Outstanding Public Debt	48.9%	52.3%	50.3%	51.5%	50.1%	48.3%	46.2%	43.8%	%
25. Consolidated Outstanding Debt	49.4%	53.2%	51.1%	52.3%	50.8%	48.9%	46.5%	43.9%	48.0%

Appendix -1.7
(Reference: Paragraph 1.5.5; Page 22)
Break-up of outstanding Utilisation Certificates

(Amount Rupees in lakh)

Sl. No.	Name of Department	Total U.C due		For Grants Outstanding		For Loan Outstanding		Total Outstanding	
		No. of U.Cs	Amount	No. of U.Cs	Amount	No. of U.Cs	Amount	No. of U.Cs	Amount
1.	Director, Sports, U.P.	07	413.91	000	000	000	000	000	000
2.	Technical Education, Degree Institutions	04	32.68	04	32.68	000	000	04	32.68
3.	Directorate, Technical Education, Diploma Institutions	20	63.97	20	63.97	000	000	20	63.97
4.	Science & Technology Department	08	1,603.55	02	698.55	000	000	02	698.55
5.	Higher Education Section 4, U.P. Govt.	NA	5,953.18	N.A.	5,792.82	000	000	N.A.	5,792.82
6.	State Educational Research & Training Board	03	34.50	000	000	000	000	000	000
7.	Basic Shiksha Parishad, U.P.	53	871.31	000	000	000	000	000	000
8.	Directorate of Intermediate & Primary Education	NA	67,114.38	N.A.	67,114.38	000	000	N.A.	67,114.38
9.	Bal Vikas Avam Pushtahar Directorate	NA	1,034.35	N.A.	23.09	000	000	N.A.	23.09
10.	Medical Education & Training, U.P.	01	20.00	000	000	000	000	000	000
11.	Directorate of Culture	38	363.13	02	120.25	000	000	02	120.25
12.	Directorate of Higher Education	NA	750.58	N.A.	750.58	000	000	N.A.	750.58
13.	Director, Local Bodies	1,254	10,335.00	530	3,463.00	000	000	530	3,463.00
14.	Director, Panchayati Raj	438	1,43,702.15	141	24,120.55	000	000	141	24,120.55
15.	State Urban Development Agency, Lucknow	NA	11,498.74	000	000	000	000	000	000
16.	Rastriya Biogas Avam Khadya Prabandhan Programme	01	84.00	NA	0.80	000	000	NA	0.80
17.	Rajya Payjal Avam Swachata Mission, Swajaldhara	01	134.10	000	000	000	000	000	000
18.	U.P. Rural Road Development Agency	01	98.50	000	000	000	000	000	000
19.	Commissioner, Rural Development	232	63,231.55	000	000	000	000	000	000
20.	Irrigation Department	01	100.00	000	000	000	000	000	000
21.	Public Works Department	01	100.00	000	000	000	000	000	000
22.	U.P. Jal Nigam	NA	8,665.40	N.A.	8,665.40	000	000	N.A.	8,665.40

23.	Minor Irrigation Department	NA	NA	N.A.	NA	N.A.	NA	N.A.	NA
24.	Ramganga Command Pariyojna	39	4,086.55	000	000	000	000	000	000
25.	Sharda Sahayak Command Pariyojana	31	2,886.45	000	000	000	000	000	000
26.	Avas Avam Shahari Niyojan Department	NA	1,695.96	N.A.	1,695.96*	000	000	N.A.	1,695.96*
27.	Nagar Vikas Anubhag 1, U.P. Govt.	18	7,158.40	01	17.55	000	000	01	17.55
28.	Director, Social Welfare	NA	10,374.02	N.A.	1,593.14	000	000	N.A.	1,593.14
29.	Director, Janjati Vikas	NA	122.69	N.A.	31.64	000	000	N.A.	31.64
30.	Sanjay Gandhi Post Graduate Institute, Lucknow	NA	7,200.00	NA	1,200.00*	000	000	NA	1,200.00*
31.	Dr. Ram Manohar Lohia Institute of Medical Science, Lucknow	03	2,496.65	1	2,465.98	000	000	1	2,465.98
32.	U.P. Rural PGI, Saifai, Etawah	NA	24,506.96	N.A.	16,106.96	000	000	N.A.	16,106.96
33.	C.S.M. Medical University, Lucknow	32	9,376.31	16	6,181.51	000	000	16	6,181.51
34.	Medical & Health Services, U.P.	20	820.22	02	77.30	000	000	02	77.30
35.	State Minority Commission	NA	8.50	NA	0.04	000	000	NA	0.04
36.	Family Welfare Department	20	288.52	05	39.83	000	000	05	39.83
37.	Ayurvedic & Unani Services, U.P.	01	4.27	NA	3.37	000	000	N.A.	3.37
38.	Homeopathy Directorate	01	2.00	000	000	000	000	000	000
39.	Bhasha Anubhag, U.P. Govt.	09	216.15	01	16.98	000	000	01	16.98
40.	Labour Commissioner	Nil	Nil	Nil	000	Nil	NIL	Nil	000
41.	Fisheries Directorate	70	482.52	000	000	000	000	000	000
42.	Department of Animal Husbandry	03	350.00	000	000	000	000	000	000
43.	Resham Nideshalaya	03	57.37	000	000	000	000	000	000
44.	Commissioner, Dugdh Vikas	NA	6,300.17	N.A.	6,158.78	000	000	N.A.	6,158.78
45.	Cooprative Societies, U.P.	17	8,724.08	02	1,528.20	000	000	02	1,528.20
46.	U.P. State Electricity Production Corporation Ltd.	NA	40,700.00	000	000	000	000	000	000
47.	U.P. Power Corporation Ltd.	NA	3,86,580.79	000	000	000	000	000	000
48.	Director, Agriculture	06	24,069.76	000	000	000	000	000	000
49.	Cane Commissioner, U.P.	337	481.37	02	3.35	000	000	02	3.35
50.	Sugar Commissioner, U.P.	97	16,100.97	91	7,379.10 +3,229.87*	05	2,742.00+ 1,250.00*	96	10,121.10+ 4,479.87*
51.	Directorate Minority Welfare	47	974.03	03	75.00	000	000	03	75.00
52.	Secretariat Administration	NA	5.00	000	000	000	000	000	000

Audit Report (Civil) for the year ended 31 March 2008

53.	NEDA	18	1,659.04	12	1,099.67	000	000	12	1,099.67
54.	Chief Conservator of Forest, U.P.	NA	65.58	NA	28.08	000	000	NA	28.08
55.	General Administration, U.P. Secretariat	01	5.00	000	000	000	000	000	000
56.	Directorate, Woman Welfare	21	335.67	10	60.25* +38.34	000	000	10	60.25* +38.34
57.	Director, Viklang Kalyan	140	9,977.68	000	000	000	000	000	000
58.	Karmik Anubhag, U.P. Shasan	02	81.19	000	000	000	000	000	000
59.	Directorate, Environment	02	9.82	02	9.82	000	000	02	9.82
60.	State Backward Caste Commission	01	24.00	000	000	000	000	000	000
61.	Dharmarth Karya Department	13	0.13	000	000	000	000	000	000
62.	Directorate, Sainik Kalyan	65	1,784.00	000	000	000	000	000	000
63.	Director, Tourism	19	45.00	000	000	000	000	000	000
64.	Director, Transport, U.P.	NA	5,706.40	000	000	N.A.	4,700.00	N.A.	4,700.00
65.	Home Department, U.P.	13	519.06	000	000	000	000	000	000
66.	Suchana Avam Jansampark Vibhag	18	194.86	13	147.06	000	000	13	147.06
67.	Department of Justice	NA	76.93	N.A.	3.04	000	000	N.A.	3.04
68.	Rashtriya Ekikaran Department	91	9.60	09	1.68	000	000	09	1.68
69.	Rajya Haj Samiti, U.P.	03	168.45	01	25.00	000	000	01	25.00
70.	U.P. Police Headquarters	03	100.00	NA	3.79	000	00	NA	3.79
71.	Director, Backward Class Welfare	01	30.00	000	000	000	000	000	000
72.	Director, Training & Sevayojan	59	27,233.50	NA	62.70	000	000	NA	62.70
73.	U.P. Khadi Avam Gramodhyoga Board	14	1,861.53	000	000	000	000	000	000
74.	Director of Industries, Kanpur	62	16,820.67	38	5,904.83	04	1,372.90	42	7,277.73
75.	Hathkargha Avam Vastrodhyog Nideshalaya, Kanpur	928	7,211.46	666	2,163.08	95	3,955.24	761	6,118.32
	Total	4,291	9,46,194.26	1,574	1,68,197.97	104	14,020.14	1,678	1,82,218.11

* Deposit in PLA.
NA- Not available

Appendix -1.8
(Reference: Paragraph 1.5.6; page 22)

Non-Submission of Accounts

Sl. No.	Name of Department	Year for which account had not been furnished
1	Council of Science & Technology, Lucknow	2007-08
2	Rashtriya Kathak Sansthan	2007-08
3	U.P. Jal Nigam	2007-08
4	U.P. Rural Institute of Medical Sciences & Research, Saifai, Etawah	2006-07,2007-08
5	Agra Mansik Arogyashala, Agra	2005-06,2006-07,2007-08
6	Netra Chikitsalaya, Aligarh	2006-07,2007-08
7	Shri Hanuman Prasad Poddar Cancer Sansthan, Gorakhpur	2006-07,2007-08
8	Pt. Deendayal Upadhyay Animal Science University Avam Cow Research Institute, Mathura	2007-08
9	U.P. Power Corporation Ltd.	2007-08
10	NEDA	2007-08
11	U.P. State Tourism Development Corporation Ltd.	2007-08

Appendix -1.9
(Reference: Paragraph 1.5.7; page 22)
Abstract of performance of the Autonomous Bodies

Name of Body	Period of entrustment of audit of accounts to C.A.G.	Year for which account due	Year up to which accounts submitted	Year up to which Separate Audit Report issued	Year up to which Audit Report sent to Govt.
Varanasi Jal Sansthan, Under Section 20(I)	2001-2010	2007-08	2006-07	2006-07	2006-07
Lucknow Jal Sansthan, Under Section 20(I)	2001-2010	2006-07, 2007-08	2005-06	2005-06	2005-06
Jhansi Jal Sansthan, Under Section 20(I)	2001-2010	2006-07, 2007-08	2005-06	2005-06	2005-06
Allahabad Jal Sansthan, Under Section 20(I)	2001-2010	2006-07, 2007-08	2005-06	2005-06	2005-06
Agra Jal Sansthan, Under Section 20(I)	2001-2010	2005-06, 2006-07, 2007-08	2004-05	2004-05	2004-05
Kanpur Jal Sansthan, Under Section 20(I)	2001-2010	2005-06, 2006-07, 2007-08	2004-05	2004-05	2004-05
Chitrakoot Jal Sansthan, Under Section 20(I)	2001-2010	2007-08	2006-07	2006-07	2006-07
U.P. Khadi & Gramodhyog Board, Lucknow under Section 19(3)	1999-2004	SAR of the year 2003-04 has been issued in 2007-08. Entrustment of audit for the period of 2004-2014 has since been received (November 2008).			

Appendix – 1.10
(Reference: Paragraph 1.6; page 22)

Department-wise/ year-wise break-up of the cases in which final action was pending at the end of March 2008

(Figures in bracket are Rupees in lakh)

Name of the department	Up to 5 years	5 to 10 years	10 to 15 years	15 to 20 years	20 to 25 years	25 years to more	Total
Agriculture	3 (8.91)	---	---	2 (0.34)	---	---	5 (9.25)
Animal Husbandry	---	2 (3.46)	6 (1.19)	7 (1.89)	---	1 (0.02)	16 (6.56)
Co-operative	---	1 (1.68)	1 (0.17)	1 (0.44)	---	---	3 (2.29)
Education	---	1 (5.00)	---	---	---	---	1 (5.00)
Finance	---	---	---	1 (0.67)	---	---	1 (0.67)
Fisheries	---	---	3 (0.87)	2 (1.33)	2 (1.00)	---	7 (3.20)
Food and Supplies	1 (3.06)	---	1 (0.30)	4 (22.10)	3 (3.32)	---	9 (28.78)
Irrigation	8 (0.48)	6 (6.46)	23 (7.65)	---	---	---	37 (14.59)
Judiciary	1 (4.44)	---	---	---	1 (0.66)	---	2 (5.10)
Land Acquisition	---	---	---	---	---	3 (331.44)	3 (331.44)
Medical & Health	---	1 (1.53)	4 (4.82)	9 (9.16)	4 (3.96)	---	18 (19.47)
Police	---	---	1 (1.21)	---	1 (0.60)	3 (2.94)	5 (4.75)
PAC	---	1 (47.48)	---	1 (0.51)	---	---	2 (47.99)
PWD	5 (34.18)	1 (0.98)	---	---	---	---	6 (35.16)
Revenue	---	---	---	---	3 (1.86)	---	3 (1.86)
Rural Development	---	---	3 (1.65)	3 (0.65)	2 (0.26)	4 (1.28)	12 (3.84)
Social Welfare	---	---	---	1 (0.25)	---	2 (0.70)	3 (0.95)
Technical Education	---	1 (11.59)	---	---	---	---	1 (11.59)
Weight and Measurement	---	---	---	1 (1.01)	---	---	1 (1.01)
Horticulture	1 (3.59)	---	---	---	---	---	1 (3.59)
Total	19 (54.66)	14 (78.18)	42 (17.86)	32 (38.35)	16 (11.66)	13 (336.38)	136 (537.09)

Appendix-1.11
(Reference: Paragraph 1.7.1; page 24)
Position of arrears in preparation of Pro forma Accounts

Sl. No.	Name of Department	Number of undertakings	Name of undertakings	Year from which accounts are due	Remarks
1	Food and Civil Supplies Department	1	Scheme for public distribution system of food grains	2006-07	Accounts finalised up to 2005-06.
2	Animal Husbandry Department	1	Consolidated Accounts of Government Live Stock and Agriculture Farms	2007-08	Accounts finalised up to 2006-07.
3	Irrigation Department	7	Irrigation Workshop Division, Meerut	2007-08	Accounts finalised up to 2006-07.
			Irrigation Workshop Division, Jhansi	-----	Accounts finalised up to 2007-08.
			Irrigation Workshop Division, Bareilly	-----	Accounts finalised up to 2007-08.
			Irrigation Workshop Division, Kanpur	-----	Accounts finalised up to 2007-08.
			Irrigation Workshop Division, Allahabad	-----	Accounts finalised up to 2007-08.
			Irrigation Workshop Division, Gorakhpur	-----	Accounts finalised up to 2007-08.
			Erection Division, Faizabad	1985-86	Accounts not prepared since inception
4	Samaj Kalyan Department	1	Criminal Tribes Settlement Tailoring Factory (Kanpur)	1980-81	Accounts finalized up to 1979-80.
5	Health Department	1	State Pharmacy of Ayurvedic and Unani medicines	1988-89	Accounts finalized up to 1987-88.
	Total	11			

Appendix-1.12

(Reference: Paragraph 1.7.1; page 24)

Investment made by the Government in departmental commercial undertakings

Sl. No.	Name of Department	Number of undertakings	Name of undertakings	Investments ¹ as per last Accounts (Rs. in lakh)	Remarks
1	Food and Civil Supplies Department	1	Scheme for public distribution system of food grains	53,110.13	Accounts finalised up to 2005-06.
2	Animal Husbandry Department	1	Consolidated Accounts of Government Live Stock and Agricultural Farms	702.48	Accounts finalised up to 2006-07.
3	Irrigation Department	7	Irrigation Workshop Division, Meerut	22.81	Accounts finalised up to 2006-07.
			Irrigation Workshop Division, Jhansi	63.55	Accounts finalised up to 2007-08.
			Irrigation Workshop Division, Bareilly	202.73	Accounts finalised up to 2007-08.
			Irrigation Workshop Division, Kanpur	20.90	Accounts finalised up to 2007-08.
			Irrigation Workshop Division, Allahabad	187.09	Accounts finalised up to 2007-08.
			Irrigation Workshop Division, Gorakhpur	153.40	Accounts finalised up to 2007-08.
			Erection Division, Faizabad	00.00	Accounts not prepared since inception
4	Samaj Kalyan Department	1	Criminal Tribes Settlement Tailoring Factory (Kanpur)	3.67	Accounts finalized up to 1979-80.
5	Health Department	1	State Pharmacy of Ayurvedic and Unani medicines	9.16	Accounts finalized up to 1987-88.
	Total	11		54,475.92	

¹ Investment represents balance of Capital Account plus Reserve Funds for Capital works.

Appendix-1.13
(Reference: Paragraph 1.7.1; page 24)

**Statement showing summarised financial results of Government
Commercial and Quasi Commercial Undertakings**

(Rupees in lakh)

Sl. No.	Name of Units	Year of the Account (Finalised)	Mean ¹ Capital	Block Asset	Accumulated Depreciation	Profit(+)/ Loss(-)	Interest on Govt. Capital	Total return ²	Percentage of total return to Mean Capital
A. Irrigation Department									
1.	IWD, Meerut	2006-07	165.46	36.05	25.00	9.30	9.10	18.40	11.12
2.	IWD, Jhansi	2007-08	(-)521.07	117.01	45.09	19.36	19.36
3.	IWD, Bareilly	2007-08	(-)1,336.20	215.80	87.59	17.29	17.29
4.	IWD, Kanpur	2007-08	461.16	18.15	11.65	3.28	25.36	28.64	6.21
5.	IWD, Allahabad	2007-08	366.95	171.54	63.52	8.77	20.18	28.95	7.89
6.	IWD, Gorakhpur	2007-08	605.03	292.55	79.46	2.39	33.28	35.67	5.90
	Total		(-)258.67	851.10	312.31	60.39	87.92	148.31	31.12
B. Animal Husbandry Department									
7.	State Live Stock cum Agricultural Farms	2006-07	855.73	170.45	11.94	(-) 177.85	56.21	(-) 121.64	---
	Total		855.73	170.45	11.94	(-) 177.85	56.21	(-) 121.64	---
C. Food and Civil Supplies Department									
8.	Scheme for public distribution system of food grains	2005-06	66,875.97	971.65	71.57	(-)6,055.23	3,678.18	(-)2,377.05	---
	Total		66,875.97	971.65	71.57	(-)6,055.23	3,678.18	(-)2,377.05	---
D. Health Department									
9.	State Pharmacy of Ayurvedic and Unani medicines	1987-88	72.11	22.96	7.59	(-) 8.46	3.83	(-) 4.63	---
	Total		72.11	22.96	7.59	(-) 8.46	3.83	(-) 4.63	---
E. Samaj Kalyan Department									
10.	Criminal Tribes Settlement Tailoring Factory (Kanpur)	1979-80	4.16	0.26	0.28	0.89	0.21	1.10	26.44
	Total		4.16	0.26	0.28	0.89	0.21	1.10	26.44

Note: This information, as informed by Accounts Wing, cannot be captured from the Finance Accounts of the State. Therefore, providing the requisite information under this sub-section is purely subject to the availability from the State Government.

¹ Mean Capital represents opening capital plus 50 per cent of net drawals after deduction of remittances and adjustments during the year.

² Total return represents profit plus interest on Government Capital.

Appendix-1.14
(Reference: Paragraph 1.7.1; page 25)
Statement showing accumulated losses of PSUs of Transport and Power Sectors

Sl. No.	Name of PSU	Latest available accounts	Accumulated losses (Rs. in crore)
Transport Sector			
1.	Uttar Pradesh State Road Transport Corporation	2006-07	851.85
Power Sector			
1.	U.P. Jal Vidyut Nigam Limited	2005-06	188.69
2.	U.P. Rajya Vidyut Utpadan Nigam Limited	2006-07	1,781.17
3.	U.P. Power Corporation Limited	2005-06	6,664.12
4.	Kanpur Electricity Supply company Limited	2003-04	515.94
5.	Purvanchal Vidyut Vitran Nigam Limited	2004-05	485.48
6.	Paschimanchal Vidyut Vitran Nigam Limited	2004-05	553.62
7.	Madhyanchal Vidyut Vitran Nigam Limited	2004-05	433.15
8.	Dakshinanchal Vidyut Vitran Nigam Limited	2004-05	702.24
9.	UPSIDC Power Company Limited	2007-08	0.13

Appendix - 2.1

(Reference: Paragraph 2.2; page 37)

Details of savings against the provisions under various Grants

(Rupees in crore)

Sl. No.	Grant No.	Name of Grant	Total provision	Expenditure	Saving
A-Revenue Voted					
1.	1	Excise Department	49.13	44.30	4.83
2.	3	Industries Department (Small Industry and Export Promotion)	82.72	67.84	14.88
3.	4	Industries Department (Mines and Minerals)	26.48	26.32	0.16
4.	7	Industries Department (Heavy and Medium Industries)	335.14	208.99	126.15
5.	8	Industries Department (Printing and Stationery)	74.57	68.82	5.75
6.	10	Agriculture and Other Allied Departments (Horticultural and Sericulture Development)	161.41	148.59	12.82
7.	11	Agriculture and Other Allied Departments (Agriculture)	1,475.85	1,392.26	83.59
8.	12	Agriculture and Other Allied Departments (Land Development and Water Resources)	131.32	127.69	3.63
9.	13	Agriculture and Other Allied Departments (Rural Development)	1,405.82	1,352.29	53.53
10.	14	Agriculture and Other Allied Departments (Panchayati Raj)	1,343.15	1,339.10	4.05
11.	15	Agriculture and Other Allied Departments (Animal Husbandry)	260.71	234.83	25.88
12.	16	Agriculture and Other Allied Departments (Dairy Development)	115.80	110.82	4.98
13.	17	Agriculture and Other Allied Departments (Fisheries)	55.19	30.71	24.48
14.	18	Agriculture and Other Allied Departments (Co-operative)	131.28	104.41	26.87
15.	19	Personnel Department (Training and Other Expenditure)	4.07	3.70	0.37
16.	20	Personnel Department (Public Service Commission)	2.67	2.16	0.51
17.	21	Food and Civil Supplies Department	147.09	121.78	25.31
18.	23	Cane Development Department (Cane)	78.72	77.46	1.26
19.	24	Cane Development Department (Sugar Industry)	266.06	236.02	30.04
20.	26	Home Department (Police)	3,340.59	3,324.34	16.25
21.	28	Home Department (Political Pension and Other Expenditure)	82.59	71.64	10.95
22.	30	Confidential Department (Revenue Special Intelligence Directorate and Other Expenditure)	2.01	1.78	0.23
23.	31	Medical Department (Medical Education and Training)	856.33	812.75	43.58
24.	32	Medical Department (Allopathy)	1,455.19	1,265.62	189.57
25.	33	Medical Department (Ayurvedic and Unani)	232.48	203.39	29.09
26.	34	Medical Department (Homeopathy)	117.42	102.24	15.18
27.	35	Medical Department (Family Welfare)	534.84	485.84	49.00
28.	36	Medical Department (Public Health)	232.39	178.28	54.11
29.	37	Urban Development Department	2,206.27	993.84	1,212.43
30.	38	Civil Aviation Department	18.74	14.71	4.03
31.	39	Language Department	6.96	6.24	0.72
32.	40	Planning Department	100.10	88.67	11.43
33.	41	Election Department	56.04	55.33	0.71
34.	42	Judicial Department	481.05	396.30	84.75
35.	44	Tourism Department	10.51	8.90	1.61
36.	45	Environment Department	93.26	3.32	89.94
37.	46	Administrative Reforms Department	4.39	3.59	0.80

38.	47	Technical Education Department	164.88	133.54	31.34
39.	48	Muslim Waqf Department	271.21	253.48	17.73
40.	49	Women and Child Welfare Department	1,889.62	1,773.50	116.12
41.	50	Revenue Department (District Administration)	249.24	237.24	12.00
42.	52	Revenue Department (Board of Revenue and Other Expenditure)	841.29	786.77	54.52
43.	53	National Integration Department	1.61	0.19	1.42
44.	54	Public Works Department (Establishment)	667.22	330.16	337.06
45.	59	Public Works Department (Estate Directorate)	74.79	69.59	5.20
46.	60	Forest Department	226.77	191.86	34.91
47.	61	Finance Department (Debt Services and Other Expenditure)	3,735.11	3,599.76	135.35
48.	63	Finance Department (Treasury and Accounts Administration)	94.70	78.90	15.80
49.	64	Finance Department (State Lottery)	0.88	0.61	0.27
50.	65	Finance Department (Audit, Small Saving etc.)	82.92	79.55	3.37
51.	66	Finance Department (Group Insurance)	1.35	1.18	0.17
52.	67	Legislative Council Secretariat	18.80	14.73	4.07
53.	68	Legislative Assembly Secretariat	57.58	43.31	14.27
54.	70	Science and Technology Department	47.78	39.18	8.60
55.	71	Education Department (Primary Education)	9,289.74	8,520.63	769.11
56.	72	Education Department (Secondary Education)	2,915.29	2,913.87	1.42
57.	73	Education Department (Higher Education)	786.69	777.58	9.11
58.	75	Education Department (State Council of Educational Research and Training)	66.77	58.49	8.28
59.	76	Labour Department (Labour Welfare)	102.10	98.33	3.77
60.	77	Labour Department (Employment)	165.43	93.18	72.25
61.	78	Secretariat Administration Department	223.41	186.37	37.04
62.	79	Social Welfare Department (Welfare of the Handicapped and Backward Classes)	1,088.41	1,023.89	64.52
63.	80	Social Welfare Department (Social Welfare and Welfare of Scheduled Castes)	1,847.13	1,751.27	95.86
64.	81	Social Welfare Department (Tribal Welfare)	38.29	22.06	16.23
65.	82	Vigilance Department	16.96	16.48	0.48
66.	83	Social Welfare Department (Special Component Plan for Scheduled Castes)	2,811.84	2,176.38	635.46
67.	84	General Administration Department	0.68	0.46	0.22
68.	85	Public Enterprises Department	2.42	2.03	0.39
69.	86	Information Department	59.40	28.80	30.60
70.	87	Soldier's Welfare Department	26.62	20.82	5.80
71.	88	Institutional Finance Department (Directorate)	32.76	2.38	30.38
72.	89	Institutional Finance Department (Trade-Tax)	236.74	222.72	14.02
73.	90	Institutional Finance Department (Entertainment and Betting-Tax)	67.19	66.41	0.78
74.	91	Institutional Finance Department (Stamps and Registration)	81.74	77.81	3.93
75.	92	Culture Department	21.87	18.91	2.96
76.	95	Irrigation Department (Establishment)	955.15	912.40	42.75
77.	96	Irrigation Department (Works)	1,370.49	1,173.90	196.59
		Total (A)	46,611.21	41,513.59	5,097.62
		B-Capital Voted			
78.	2	Housing Department	379.14	365.44	13.70
79.	7	Industries Department (Heavy and Medium Industries)	154.20	148.56	5.64
80.	8	Industries Department (Printing and Stationery)	9.48	7.00	2.48
81.	9	Power Department	6,288.53	4,739.91	1,548.62

Audit Report (Civil) for the year ended 31 March 2008

82.	10	Agriculture and Other Allied Departments (Horticultural and Sericulture Development)	2.85	2.69	0.16
83.	11	Agriculture and Other Allied Departments (Agriculture)	175.94	121.03	54.91
84.	14	Agriculture and Other Allied Departments (Panchayati Raj)	455.09	112.19	342.90
85.	15	Agriculture and Other Allied Departments (Animal Husbandry)	100.12	47.34	52.78
86.	18	Agriculture and Other Allied Departments (Co-operative)	43.85	40.88	2.97
87.	21	Food and Civil Supplies Department	6,828.41	4,843.70	1,984.71
88.	22	Sports Department	50.00	42.02	7.98
89.	23	Cane Development Department (Cane)	16.00	15.26	0.74
90.	26	Home Department (Police)	218.56	172.38	46.18
91.	27	Home Department (Civil Defence)	6.67	0.00	6.67
92.	32	Medical Department (Allopathy)	694.24	676.09	18.15
93.	33	Medical Department (Ayurvedic and Unani)	15.11	14.13	0.98
94.	34	Medical Department (Homeopathy)	13.28	13.26	0.02
95.	35	Medical Department (Family Welfare)	75.00	74.85	0.15
96.	37	Urban Development Department	257.22	243.18	14.04
97.	38	Civil Aviation Department	61.42	46.84	14.58
98.	40	Planning Department	265.38	84.09	181.29
99.	42	Judicial Department	55.24	35.74	19.50
100.	44	Tourism Department	68.81	51.36	17.45
101.	45	Environment Department	82.00	0.00	82.00
102.	47	Technical Education Department	18.12	10.14	7.98
103.	50	Revenue Department (District Administration)	131.93	130.90	1.03
104.	52	Revenue Department (Board of Revenue and Other Expenditure)	21.37	20.33	1.04
105.	53	National Integration Department	0.01	0.00	0.01
106.	56	Public Works Department (Special Area Programme)	280.00	278.70	1.30
107.	57	Public Works Department (Communication-Bridges)	265.70	249.29	16.41
108.	59	Public Works Department (Estate Directorate)	129.47	123.60	5.87
109.	60	Forest Department	191.98	191.10	0.88
110.	61	Finance Department (Debt Services and other Expenditure)	283.01	133.29	149.72
111.	62	Finance Department (Superannuation Allowances and Pensions)	50.00	4.47	45.53
112.	67	Legislative Council Secretariat	0.30	0.00	0.30
113.	68	Legislative Assembly Secretariat	1.20	0.80	0.40
114.	71	Education Department (Primary Education)	1.10	0.98	0.12
115.	75	Education Department (Estate Council of Educational Research and Training)	10.71	9.74	0.97
116.	77	Labour Department (Employment)	23.59	19.18	4.41
117.	79	Social Welfare Department (Welfare of the Handicapped and Backward Classes)	12.15	10.56	1.59
118.	81	Social Welfare Department (Tribal Welfare)	9.37	0.57	8.80
119.	86	Information Department	4.80	0.00	4.80
120.	87	Soldier's Welfare Department	0.55	0.54	0.01
121.	89	Institutional Finance Department (Trade-Tax)	13.73	11.96	1.77
122.	92	Culture Department	158.41	156.95	1.46
123.	95	Irrigation Department (Establishment)	164.76	147.48	17.28
		Total (B)	18,088.80	13,398.52	4,690.28
		C-Revenue-Charged			
124.	1	Excise Department	0.10	0.03	0.07
125.	2	Housing Department	10.68	10.24	0.44
126.	3	Industries Department (Small Industry and Export Promotion)	0.15	0.05	0.10

127.	9	Power Department	17.30	12.63	4.67
128.	10	Agriculture and Other Allied Departments (Horticultural and Sericulture Development)	0.53	0.49	0.04
129.	11	Agriculture and Other Allied Departments (Agriculture)	0.12	0.11	0.01
130.	13	Agriculture and Other Allied Departments (Rural Development)	0.10	0.02	0.08
131.	15	Agriculture and Other Allied Departments (Animal Husbandry)	0.14	0.00	0.14
132.	18	Agriculture and Other Allied Departments (Co-operative)	6.14	3.85	2.29
133.	20	Personnel Department (Public Service Commission)	15.22	13.27	1.95
134.	21	Food and Civil Supplies Department	178.24	177.98	0.26
135.	23	Cane Development Department (Cane)	0.06	0.01	0.05
136.	25	Home Department (Jails)	0.08	0.00	0.08
137.	26	Home Department (Police)	0.66	0.04	0.62
138.	29	Confidential Department (Governor's Secretariat)	4.47	3.84	0.63
139.	32	Medical Department (Allopathy)	0.10	0.05	0.05
140.	35	Medical Department (Family Welfare)	0.15	0.00	0.15
141.	36	Medical Department (Public Health)	0.07	0.00	0.07
142.	42	Judicial Department	81.53	64.83	16.70
143.	47	Technical Education Department	0.01	0.00	0.01
144.	49	Women and Child Welfare Department	0.10	0.00	0.10
145.	50	Revenue Department (District Administration)	0.16	0.00	0.16
146.	52	Revenue Department (Board of Revenue and Other Expenditure)	0.86	0.66	0.20
147.	54	Public Works Department (Establishment)	0.04	0.01	0.03
148.	58	Public Works Department (Communications- Roads)	0.05	0.00	0.05
149.	60	Forest Department	0.13	0.00	0.13
150.	61	Finance Department (Debt Services and other expenditure)	13,948.99	13,708.78	240.21
151.	62	Finance Department (Superannuation Allowances and Pensions)	1.23	0.90	0.33
152.	63	Finance Department (Treasury and Accounts Administration)	0.04	0.00	0.04
153.	67	Legislative Council Secretariat	0.44	0.30	0.14
154.	68	Legislative Assembly Secretariat	0.66	0.65	0.01
155.	72	Education Department (Secondary Education)	0.03	0.01	0.02
156.	89	Institutional Finance Department (Trade-Tax)	19.47	19.37	0.10
157.	95	Irrigation Department (Establishment)	0.50	0.00	0.50
Total (C)			14,288.55	14,018.12	270.43
D-Capital-Charged					
158.	2	Housing Department	15.53	15.52	0.01
159.	18	Agriculture and Other Allied Departments (Co-operative)	11.11	11.08	0.03
160.	21	Food and Civil Supplies Department	1,500.00	980.00	520.00
161.	52	Revenue Department (Board of Revenue and Other Expenditure)	0.11	0.00	0.11
162.	55	Public Works Department (Buildings)	10.65	2.35	8.30
163.	58	Public Works Department (Communications- Roads)	5.50	5.47	0.03
164.	61	Finance Department (Debt Services and Other Expenditure)	14,065.71	4,361.69	9,704.02
165.	96	Irrigation Department (Works)	4.00	0.45	3.55
Total (D)			15,612.61	5,376.56	10,236.05
Grand Total (A)+(B)+(C)+(D)			94,601.17	74,306.79	20,294.38

Appendix - 2.2
(Reference: Paragraph 2.2 & 2.3.4; page 38 and 40)
Excess Expenditure over Grants/Charged Appropriations

(Rupees in crore)

Sl. No.	Grant No.	Name of Grant/ Charged Appropriation	Total Grant/ Appropriation	Expenditure	Excess	
					Total Excess	Amount Requiring regularisation
A-Revenue-Voted						
1	2	Housing Department	481.07	481.88	0.81	
2	5	Industries Department (Handloom and Village Industries)	42.71	45.52	2.81	
3	6	Industries Department (Handloom Industry)	28.22	46.64	18.42	
4	9	Power Department	2,533.70	2,533.78	0.08	
5	22	Sports Department	22.76	23.57	0.81	
6	25	Home Department (Jails)	158.49	162.91	4.42	
7	27	Home Department (Civil Defence)	159.78	179.05	19.27	
8	43	Transport Department	44.78	47.79	3.01	
9	51	Revenue Department (Relief on Account of Natural Calamities)	334.03	604.95	270.92	218.82
10	55	Public Works Department (Buildings)	29.06	32.79	3.73	1.43
11	57	Public Works Department (Communication-Bridges)	10.00	12.80	2.80	2.80
12	58	Public Works Department (Communications- Roads)	1,282.70	1,309.59	26.89	24.32
13	62	Finance Department (Superannuation Allowances and Pensions)	3,883.01	4,368.29	485.28	485.28
Total (A)			9,010.31	9,849.56	839.25	732.65
B-Capital Voted						
14	1	Excise Department	0.35	1.32	0.97	
15	3	Industries Department (Small Industry and Export Promotion)	4.25	10.22	5.97	
16	4	Industries Department (Mines and Minerals)	0.00	0.62	0.62	
17	6	Industries Department (Handloom Industries)	0.00	0.13	0.13	
18	13	Agriculture and Other Allied Departments (Rural Development)	729.48	769.94	40.46	21.62
19	16	Agriculture and Other Allied Departments (Dairy Development)	2.00	2.15	0.15	0.15
20	24	Cane Development Department (Sugar Industry)	224.50	227.50	3.00	
21	25	Home Department (Jails)	42.93	48.35	5.42	
22	31	Medical Department (Medical Education and Training)	137.72	139.23	1.51	
23	36	Medical Department (Public Health)	0.00	0.80	0.80	
24	43	Transport Department	4.80	23.81	19.01	
25	49	Women and Child Welfare Department	25.11	25.94	0.83	

26	55	Public Works Department (Buildings)	45.55	722.19	676.64	644.60
27	58	Public Works Department (Communications- Roads)	2,550.29	3,995.92	1,445.63	1,427.82
28	63	Finance Department (Treasury and Accounts Administration)	12.82	12.98	0.16	0.16
29	72	Education Department (Secondary Education)	21.48	23.97	2.49	
30	73	Education Department (Higher Education)	37.50	44.98	7.48	
31	80	Social Welfare Department (Social Welfare and Welfare of Scheduled Castes)	0.00	11.83	11.83	
32	83	Social Welfare Department (Special Component Plan for Scheduled Castes)	2,517.36	2,520.89	3.53	3.53
33	96	Irrigation Department (Works)	2,073.79	2,549.15	475.36	474.20
Total (B)			8,429.93	11,131.92	2,701.99	2,572.08
C-Revenue Charged						
34	51	Revenue Department (Relief on Account of Natural Calamities)	313.45	617.93	304.48	304.48
35	55	Public Works Department (Buildings)	2.26	2.78	0.52	
36	66	Finance Department (Group Insurance)	115.55	122.09	6.54	1.44
Total (C)			431.26	742.80	311.54	305.92
D-Capital Charged						
37	7	Industries Department (Heavy and Medium Industries)	0.00	2.87	2.87	
Total (D)			0.00	2.87	2.87	
Grand Total (A)+(B)+(C)+(D)			17,871.50	21,727.15	3,855.65	3,610.65

* Includes recoupment of expenditure (Rs. 219.62 crore) met from the Contingency Fund during 1987-2000 and adjustments (Rs. 25.38 crore) from 111-Departmental Adjustment Accounts, 8658- Suspense Accounts.

Appendix - 2.3

(Reference: Paragraph 2.3.2; page 39)

Details of savings by more than Rs one crore each and also by more than 10 per cent of total provision

(Rupees in crore)				
Sl. No.	Grant No.	Name of Grant	Total Provision	Amount of savings (Percentage of total provision in brackets)
A-Revenue Voted				
1.	3	Industries Department (Small Industry and Export Promotion)	82.72	14.88(18)
2.	7	Industries Department (Heavy and Medium Industries)	335.14	126.15(38)
3.	17	Agriculture and Other Allied Departments (Fisheries)	55.19	24.48(44)
4.	18	Agriculture and Other Allied Departments (Co-operative)	131.28	26.87(20)
5.	21	Food and Civil Supplies Department	147.09	25.31(17)
6.	24	Cane Development Department (Sugar Industry)	266.06	30.04(11)
7.	28	Home Department (Political Pension and Other Expenditure)	82.59	10.95(13)
8.	32	Medical Department (Allopathy)	1,455.19	189.57(13)
9.	33	Medical Department (Ayurvedic and Unani)	232.48	29.09(13)
10.	34	Medical Department (Homeopathy)	117.42	15.18(13)
11.	36	Medical Department (Public Health)	232.39	54.11(23)
12.	37	Urban Development Department	2,206.27	1,212.43(55)
13.	38	Civil Aviation Department	18.74	4.03(22)
14.	40	Planning Department	100.10	11.43(11)
15.	42	Judicial Department	481.05	84.75(18)
16.	44	Tourism Department	10.51	1.61(15)
17.	45	Environment Department	93.26	89.94(96)
18.	47	Technical Education Department	164.88	31.34(19)
19.	53	National Integration Department	1.61	1.42(88)
20.	54	Public Works Department (Establishment)	667.22	337.06(51)
21.	60	Forest Department	226.77	34.91(15)
22.	63	Finance Department (Treasury and Accounts Administration)	94.70	15.80(17)
23.	67	Legislative Council Secretariat	18.80	4.07(22)
24.	68	Legislative Assembly Secretariat	57.58	14.27(25)
25.	70	Science and Technology Department	47.78	8.60(18)
26.	75	Education Department (State Council of Educational Research and Training)	66.77	8.28(12)
27.	77	Labour Department (Employment)	165.43	72.25(44)
28.	78	Secretariat Administration Department	223.41	37.04(17)
29.	81	Social Welfare Department (Tribal Welfare)	38.29	16.23(42)
30.	83	Social Welfare Department (Special Component Plan for Scheduled Castes)	2,811.84	635.46(23)
31.	86	Information Department	59.40	30.60(52)
32.	87	Soldier's Welfare Department	26.62	5.80(22)
33.	88	Institutional Finance Department (Directorate)	32.76	30.38(93)
34.	92	Culture Department	21.87	2.96(14)
35.	96	Irrigation Department (Works)	1,370.49	196.59(14)
Total (A)			12,143.70	3,433.88

B- Capital Voted				
36.	8	Industries Department (Printing and Stationery)	9.48	2.48(26)
37.	9	Power Department	6,288.53	1,548.62(25)
38.	11	Agriculture and Other Allied Departments (Agriculture)	175.94	54.91(31)
39.	14	Agriculture and Other Allied Departments (Panchayati Raj)	455.09	342.90(75)
40.	15	Agriculture and Other Allied Departments (Animal Husbandry)	100.12	52.78(53)
41.	21	Food and Civil Supplies Department	6,828.41	1,984.71(29)
42.	22	Sports Department	50.00	7.98(16)
43.	26	Home Department (Police)	218.56	46.18(21)
44.	27	Home Department (Civil Defence)	6.67	6.67(100)
45.	38	Civil Aviation Department	61.42	14.58(24)
46.	40	Planning Department	265.38	181.29(68)
47.	42	Judicial Department	55.24	19.50(35)
48.	44	Tourism Department	68.81	17.45(25)
49.	45	Environment Department	82.00	82.00(100)
50.	47	Technical Education Department	18.12	7.98(44)
51.	61	Finance Department (Debt Services and other Expenditure)	283.01	149.72(53)
52.	62	Finance Department (Superannuation Allowances and Pensions)	50.00	45.53(91)
53.	77	Labour Department (Employment)	23.59	4.41(19)
54.	79	Social Welfare Department (Welfare of the Handicapped and Backward Classes)	12.15	1.59(13)
55.	81	Social Welfare Department (Tribal Welfare)	9.37	8.80(94)
56.	86	Information Department	4.80	4.80(100)
57.	89	Institutional Finance Department (Trade-Tax)	13.73	1.77(13)
Total (B)			15,080.42	4,586.65
C-Revenue Charged				
58.	9	Power Department	17.30	4.67(27)
59.	18	Agriculture and Other Allied Departments (Co-operative)	6.14	2.29(37)
60.	20	Personnel Department (Public Service Commission)	15.22	1.95(13)
61.	42	Judicial Department	81.53	16.70(20)
Total (C)			120.19	25.61
D-Capital Charged				
62.	21	Food and Civil Supplies Department	1,500.00	520.00(35)
63.	55	Public Works Department (Buildings)	10.65	8.30(78)
64.	61	Finance Department (Debt Services and other Expenditure)	14,065.71	9,704.02(69)
65.	96	Irrigation Department (Works)	4.00	3.55(89)
Total (D)			15,580.36	10,235.87
Grand Total (A)+(B)+(C)+(D)			42,924.67	18,282.01

Appendix - 2.4
(Reference: Paragraph 2.3.4; page 40)
Excess expenditure over provision relating to previous years
from 1990-91 to 2006-07

(Rupees in crore)

Year	No. of grants/ appropriation	Grant/Appropriation	Amount of excess	Amount for which explanations furnished to PAC
1990-91	55	Revenue-Voted 1,4,10,11,14,15,22,24,26,27,32,33,34,35,36,37,42,43,52, 56,57,63,72,73,74,75,76,77,78,81,82,83,84,93 Capital-Voted 16,42,43,47,59,73,76,79 Unnumbered grant Revenue-Charged 2,6,7,21,42,60,62,65,67 Capital-Charged 7,52,55	2,450.89	28.86
1991-92	56	Revenue-Voted 8,22,29,33,34,36,37,41,42,44,56,66,71,72,73,74 75,76,78,81,82,83,84,85,88,90,93,94 Capital-Voted 1,8,10,13,23,27,32,35,47,52,63,73,76,79,86,92 Revenue-Charged 2,7,11,40,55,59,65,67,74,89 Capital-Charged 52,55	1,158.06	22.37
1992-93	81	Revenue-Voted 1,8,9,10,11,12,13,21,23,24,25,35,36,37,38,39,41, 42,43,44,47,48,49,50,51,52,56,57,62,64,67,72, 77,81,83,85,87,89,90,91,93 Capital-Voted 3,12,13,15,16,18,19,21,27,35,38,49,55,58,63,73, 77,80,94,95 Revenue-Charged 2,16,24,26,28,37,42,46,52,55,65,66,67,72,78,88,94 Capital-Charged 24,51,52	1,815.56	96.01
1993-94	73	Revenue-Voted 10,15,16,17,18,22,23,25,27,28,29,32,33,34,35,36,37,43, 50,52,53,54,55,56,57,58,70,73,81,83,85,89,90,91,93 Capital-Voted 4,12,15,16,17,18,21,28,33,38,40,43,50,55,58,69, 73,80,94 Revenue-Charged 7,20,28,29,37,46,47,52,58,65,78,88 Capital-Charged 18,23,26,42,52,61,95	930.59	207.63
1994-95	58	Revenue-Voted 1,5,9,10,23,25,35,41,44,48,50,51,52,56,57,58,59,62,64,6 7,70,73,78,81,83,85,90,91,93 Capital-Voted 3,8,9,12,13,15,20,22,25,26,42,55,57,58,60,69,72, 77,80,94,95 Revenue-Charged 1,24,29,42,61 Capital-Charged 26,52,58,	2,011.01	85.36
1995-96	43	Revenue-Voted 2,9,14,16,36,43,47,48,55,58,62,66,70,75,81,83,84,93,94 Capital-Voted 5,7,13,33,49,50,53,55,58,59,72,94 Revenue-Charged 26,29,42,71,72,73,95 Capital-Charged 2,5,24,26,52	621.43	247.95
1996-97	27	Revenue-Voted 2,35,39,51,56,58,59,62,64,70,83,93,94, Capital-Voted 4,32,40,55,58,60,65,81,94,95 Revenue-Charged 95 Capital-Charged 26,51,52	711.95	345.47
1997-98	16	Revenue-Voted 28,35,56,58,64,66,78,81,90 Capital-Voted 11,34,42,55	590.21	203.26

		Capital-Charged 2,52,61		
1998-99	27	Revenue-Voted 1,4,9,10,27,50,51,58,66,78,81,87,89,90 Capital-Voted 21,38,45,55,58,65,80,95 Revenue-Charged 42,66,89 Capital-Charged 52,61	730.56	240.66
1999-2000	21	Revenue -Voted 4,12,14,23,51,66,78,81,90 Capital-Voted 10,21,36,55,63,92 Revenue- Charged 47,73,89 Capital-Charged 52,61,75	8,785.95	347.56
2000-2001	17	Revenue -Voted 12,32,59,62,81,90,93,94 Capital-Voted 36,55,59,93 Revenue- Charged 3,48,52,72 Capital-Charged 61	843.87	
2001-02	29	Revenue-Voted 90,94 Capital-Voted 10,21,42,55,73 Revenue-Charged 2,12,13,17,26,27,28,31,33,34,36,52,55,65,72,75,76,77, 80,91 Capital-Charged 21,52	668.62	
2002-03	27	Revenue- Voted 5,27,39,46,51,55,58,62,94 Capital- Voted 10,21,40,55,58,72,77,92 Revenue- Charged 2,10,47,48,49,52,78 Capital- Charged 2,52,61	5,532.40	
2003-04	16	Revenue- Voted 12, 39, 91, 94 Capital- Voted 3, 10, 21, 23, 32, 34, 35, 55 Revenue- Charged 52, 55 Capital- Charged 52, 61	3,644.99	
2004-05	22	Revenue- Voted 2, 3, 9, 22, 25, 55, 58, 85 Capital- Voted 4, 15, 16, 21, 32, 34, 55, 58, 59, 79 Revenue- Charged 52, 55, 61 Capital- Charged 61	1,899.33	
2005-06	29	Revenue- Voted 8, 12, 19, 53, 55, 57, 58, 72 Capital- Voted 15, 16, 18, 23, 24, 33, 34, 37, 38, 40, 55, 56, 57, 58, 73, 75, 96 Revenue- Charged 1, 52 Capital- Charged 52, 55	1,026.78	
2006-07	24	Revenue- Voted 9, 13, 55, 58, 61, 62, 73, 91, 95 Capital- Voted 3, 16, 31, 37, 55, , 57, 58, 89, 96, Revenue- Charged 2, 3, 10, 52, 62, 89	2,484.47	
Total			35,906.67	1,825.13

Appendix - 2.5
(Reference: Paragraph 2.3.6; page 40)
Grants where Supplementary Provision proved entirely unnecessary

(Rupees in crore)

Sl. No.	Grant No.	Name of Grant	Supplementary provision obtained	Saving
A-Revenue Voted				
1.	3	Industries Department (Small Industry and Export Promotion)	9.27	14.88
2.	10	Agriculture and Other Allied Departments (Horticulture and Sericulture Development)	4.48	12.82
3.	11	Agriculture and Other Allied Departments (Agriculture)	5.36	83.59
4.	13	Agriculture and Other Allied Departments (Rural Development)	0.10	53.53
5.	16	Agriculture and Other Allied Departments (Dairy Development)	0.87	4.98
6.	19	Personnel Department (Training and Other Expenditure)	0.02	0.37
7.	34	Medical Department (Homeopathy)	0.10	15.18
8.	35	Medical Department (Family Welfare)	2.67	49.00
9.	37	Urban Development Department	5.21	1,212.43
10.	40	Planning Department	0.34	11.43
11.	42	Judicial Department	0.20	84.75
12.	44	Tourism Department	0.02	1.61
13.	46	Administrative Reforms Department	0.31	0.80
14.	49	Women and Child Welfare Department	0.47	116.12
15.	53	National Integration Department	0.06	1.42
16.	60	Forest Department	0.06	34.91
17.	64	Finance Department (State Lottery)	0.11	0.27
18.	71	Education Department (Primary Education)	436.30	769.11
19.	76	Labour Department (Labour Welfare)	1.53	3.77
20.	77	Labour Department (Employment)	1.10	72.25
21.	78	Secretariat Administration Department	0.40	37.04
22.	79	Social Welfare Department (Welfare of the Handicapped and Backward Classes)	9.50	64.52
23.	81	Social Welfare Department (Tribal Welfare)	9.28	16.23
24.	83	Social Welfare Department (Special Component Plan for Scheduled Castes)	333.50	635.46
25.	84	General Administration Department	0.11	0.22
26.	86	Information Department	7.50	30.60
27.	88	Institutional Finance Department (Directorate)	30.00	30.38
28.	89	Institutional Finance Department (Trade-Tax)	0.21	14.02
29.	96	Irrigation Department (Works)	150.00	196.59
		Total (A)	1,009.08	3,568.28

B-Capital Voted				
30.	9	Power Department	7.71	1,548.62
31.	33	Medical Department (Ayurvedic and Unani)	0.50	0.98
32.	38	Civil Aviation Department	0.15	14.58
33.	40	Planning Department	59.71	181.29
34.	52	Revenue Department (Board of Revenue and Other Expenditure)	0.50	1.04
35.	60	Forest Department	0.20	0.88
36.	79	Social Welfare Department (Welfare of the Handicapped and Backward Classes)	1.00	1.59
37.	86	Information Department	2.50	4.80
38.	95	Irrigation Department (Establishment)	0.16	17.28
		Total (B)	72.43	1,771.06
C-Revenue-Charged				
39.	21	Food and Civil Supplies Department	0.23	0.26
40.	23	Cane Development Department (Cane)	0.04	0.05
		Total (C)	0.27	0.31
		Grand Total (A)+(B)+(C)	1,081.78	5,339.65

Appendix - 2.6

(Reference: Paragraph 2.3.7; page 40)

Inadequate Supplementary Grants to cover excess expenditure

(Rupees in crore)

Sl. No.	Grant No.	Name of Grant/Charged Appropriation	Supplementary Provision	Excess Expenditure
(A) Inadequate supplementary grants				
Revenue-Voted				
1	2	Housing Department	135.94	0.81
2	22	Sports Department	2.28	0.81
3	27	Home Department (Civil Defence)	4.00	19.27
4	55	Public Works Department (Buildings)	2.00	3.73
		Total	144.22	24.62
Capital Voted				
5	24	Cane Development Department (Sugar Industry)	133.00	3.00
6	49	Women and Child Welfare Department	0.02	0.83
7	83	Social Welfare Department (Special Component Plan for Scheduled Castes)	9.80	3.53
8	96	Irrigation Department (Works)	5.00	475.36
		Total	147.82	482.72
		Grand Total (A)	292.04	507.34
(B) Cases where demand for supplementary grants were not anticipated				
Revenue-Voted				
1.	5	Industries Department (Handloom and Village Industries)	Nil	2.81
2.	6	Industries Department (Handloom Industry)	Nil	18.42
3.	9	Power Department	Nil	0.08
4.	25	Home Department (Jails)	Nil	4.42
5.	43	Transport Department	Nil	3.01
6.	51	Revenue Department (Relief on Account of Natural Calamities)	Nil	270.92
7.	57	Public Works Department (Communication-Bridges)	Nil	2.80
8.	58	Public Works Department (Communications-Roads)	Nil	26.89
9.	62	Finance Department (Superannuation Allowances and Pensions)	Nil	485.28
		Total	Nil	814.63
Capital Voted				
10.	1	Excise Department	Nil	0.97
11.	3	Industries Department (Small Industry and Export Promotion)	Nil	5.97
12.	4	Industries Department (Mines and Minerals)	Nil	0.62

13.	6	Industries Department (Handloom Industry)	Nil	0.13
14.	13	Agriculture and Other Allied Departments (Rural Development)	Nil	40.46
15.	16	Agriculture and Other Allied Departments (Dairy Development)	Nil	0.15
16.	25	Home Department (Jails)	Nil	5.42
17.	31	Medical Department (Medical Education and Training)	Nil	1.51
18.	36	Medical Department (Public Health)	Nil	0.80
19.	43	Transport Department	Nil	19.01
20.	55	Public Works Department (Buildings)	Nil	676.64
21.	58	Public Works Department (Communications-Roads)	Nil	1,445.63
22.	63	Finance Department (Treasury and Accounts Administration)	Nil	0.16
23.	72	Education Department (Secondary Education)	Nil	2.49
24.	73	Education Department (Higher Education)	Nil	7.48
25.	80	Social Welfare Department (Social Welfare and Welfare of Scheduled Castes)	Nil	11.83
		Total	Nil	2,219.27
Revenue Charged				
26.	51	Revenue Department (Relief on Account of Natural Calamities)	Nil	304.48
27.	55	Public Works Department (Buildings)	Nil	0.52
28.	66	Finance Department (Group Insurance)	Nil	6.54
		Total	Nil	311.54
Capital Charged				
29.	7	Industries Department (Heavy and Medium Industries)	Nil	2.87
		Total	Nil	2.87
		Grand Total (B)	Nil	3,348.31

Appendix - 2.7

(Reference: Paragraph 2.3.9; page 41)

**Savings exceeding Rs. one crore in each case not/ partially surrendered
(Rupees in crore)**

Sl. No.	Grant Number	Description of the Grant	Savings	Surrendered	Saving not surrendered	
					Total	Partial
(A) Cases where savings were not surrendered						
Revenue – Voted						
1.	12	Agriculture and Other Allied Departments (Land Development and Water Resources)	3.63	NIL	3.63	
2.	14	Agriculture and Other Allied Departments (Panchayati Raj)	4.05	NIL	4.05	
3.	15	Agriculture and Other Allied Departments (Animal Husbandry)	25.88	NIL	25.88	
4.	21	Food and Civil Supplies Department	25.31	NIL	25.31	
5.	23	Cane Development Department (Cane)	1.26	NIL	1.26	
6.	24	Cane Development Department (Sugar Industry)	30.04	NIL	30.04	
7.	26	Home Department (Police)	16.25	NIL	16.25	
8.	31	Medical Department (Medical Education and Training)	43.58	NIL	43.58	
9.	33	Medical Department (Ayurvedic and Unani)	29.09	NIL	29.09	
10.	34	Medical Department (Homeopathy)	15.18	NIL	15.18	
11.	36	Medical Department (Public Health)	54.11	NIL	54.11	
12.	40	Planning Department	11.43	NIL	11.43	
13.	45	Environment Department	89.94	NIL	89.94	
14.	47	Technical Education Department	31.34	NIL	31.34	
15.	48	Muslim Waqf Department	17.73	NIL	17.73	
16.	49	Women and Child Welfare Department	116.12	NIL	116.12	
17.	50	Revenue Department (District Administration)	12.00	NIL	12.00	
18.	60	Forest Department	34.91	NIL	34.91	
19.	63	Finance Department (Treasury and Accounts Administration)	15.80	NIL	15.80	
20.	70	Science and Technology Department	8.60	NIL	8.60	
21.	72	Education Department (Secondary Education)	1.42	NIL	1.42	
22.	75	Education Department (State Council of Educational Research and Training)	8.28	NIL	8.28	
23.	77	Labour Department (Employment)	72.25	NIL	72.25	
24.	79	Social Welfare Department (Welfare of the Handicapped and Backward Classes)	64.52	NIL	64.52	
25.	83	Social Welfare Department (Special Component Plan for Scheduled Castes)	635.46	NIL	635.46	
26.	86	Information Department	30.60	NIL	30.60	
27.	87	Soldier's Welfare Department	5.80	NIL	5.80	
28.	88	Institutional Finance Department (Directorate)	30.38	NIL	30.38	

29.	91	Institutional Finance Department (Stamps and Registration)	3.93	NIL	3.93	
30.	92	Culture Department	2.96	NIL	2.96	
31.	95	Irrigation Department (Establishment)	42.75	NIL	42.75	
32.	96	Irrigation Department (Works)	196.59	NIL	196.59	
Total			1,681.19	NIL	1,681.19	
Capital-Voted						
33.	7	Industries Department (Heavy and Medium Industries)	5.64	NIL	5.64	
34.	9	Power Department	1,548.62	NIL	1,548.62	
35.	14	Agriculture and Other Allied Departments (Panchayati Raj)	342.90	NIL	342.90	
36.	15	Agriculture and Other Allied Departments (Animal Husbandry)	52.78	NIL	52.78	
37.	21	Food and Civil Supplies Department	1,984.71	NIL	1,984.71	
38.	22	Sports Department	7.98	NIL	7.98	
39.	26	Home Department (Police)	46.18	NIL	46.18	
40.	27	Home Department (Civil Defence)	6.67	NIL	6.67	
41.	32	Medical Department (Allopathy)	18.15	NIL	18.15	
42.	40	Planning Department	181.29	NIL	181.29	
43.	45	Environment Department	82.00	NIL	82.00	
44.	47	Technical Education Department	7.98	NIL	7.98	
45.	50	Revenue Department (District Administration)	1.03	NIL	1.03	
46.	56	Public Works Department (Special Area Programme)	1.30	NIL	1.30	
47.	57	Public Works Department (Communication-Bridges)	16.41	NIL	16.41	
48.	62	Finance Department (Superannuation allowances And Pension)	45.53	NIL	45.53	
49.	77	Labour Department (Employment)	4.41	NIL	4.41	
50.	79	Social Welfare Department (Welfare of the Handicapped and Backward Classes)	1.59	NIL	1.59	
51.	81	Social Welfare Department (Tribal Welfare)	8.80	NIL	8.80	
52.	86	Information Department	4.80	NIL	4.80	
53.	92	Culture Department	1.46	NIL	1.46	
54.	95	Irrigation Department (Establishment)	17.28	NIL	17.28	
Total			4,387.51	NIL	4,387.51	
Revenue-Charged						
55.	9	Power Department	4.67	NIL	4.67	
56.	61	Finance Department (Debt Services and other Expenditure)	240.21	NIL	240.21	
Total			244.88	NIL	244.88	
Capital-Charged						
57.	96	Irrigation Department (Works)	3.55	NIL	3.55	
Total			3.55	NIL	3.55	
Grand Total			6,317.13	NIL	6,317.13	

(B) Cases of partial surrender					
Revenue – Voted					
1.	3	Industries Department (Small Industry and Export Promotion)	14.88	5.33	9.55
2.	7	Industries Department (Heavy and Medium Industries)	126.15	50.00	76.15
3.	10	Agriculture and Other Allied Departments (Horticultural and Sericulture Development)	12.82	0.13	12.69
4.	13	Agriculture and Other Allied Departments (Rural Development)	53.53	13.93	39.60
5.	28	Home department (Political Pension and Other Expenditure)	10.95	7.87	3.08
6.	32	Medical Department (Allopathy)	189.57	58.38	131.19
7.	35	Medical Department (Family Welfare)	49.00	32.59	16.41
8.	40	Planning Department	11.43	0.10	11.33
9.	52	Revenue Department (Board of Revenue and Other Expenditure)	54.52	21.10	33.42
10.	54	Public Works Department (Establishment)	337.06	17.48	319.58
11.	65	Finance Department (Audit, Small Saving etc.)	3.37	1.50	1.87
12.	71	Education Department (Primary Education)	769.11	667.39	101.72
13.	76	Labour Department (Labour Welfare)	3.77	0.47	3.30
14.	81	Social Welfare Department (Tribal Welfare)	16.23	6.74	9.49
Total			1,652.39	883.01	769.38
Capital-Voted					
15.	59	Public Works Department (Estate Directorate)	5.87	1.31	4.56
16.	61	Finance Department (Debt Services and Other Expenditure)	149.72	131.94	17.78
Total			155.59	133.25	22.34
Capital – Charged					
17.	55	Public Works Department (Buildings)	8.30	6.77	1.53
Total			8.30	6.77	1.53
Grand Total			1,816.28	1,023.03	793.25

Appendix - 2.8

(Reference: Paragraph 2.3.9; page 41)

Amounts surrendered in March 2008

(Rupees in crore)

Sl. No.	Grant No.	Descriptions of the Grants	Amount
Revenue Voted			
1.	1	Excise Department	4.82
2.	16	Agriculture and Other Allied Departments (Dairy Development)	4.65
3.	53	National Integration Department	1.30
Total			10.77
Capital Voted			
4.	2	Housing Department	13.70
5.	8	Industries Department (Printing and Stationery)	2.48
6.	38	Civil Aviation Department	14.58
Total			30.76
Revenue Charged			
7.	18	Agriculture and Other Allied Departments (Co-operative)	2.29
8.	20	Personnel Department (Public Service Commission)	1.94
Total			4.23
Capital Charged			
9.	21	Food and Civil Supplies Department	520.00
Total			520.00
Grand Total			565.76

Appendix - 2.9
(Reference: Paragraph 2.5; page 43)

Rush of Expenditure

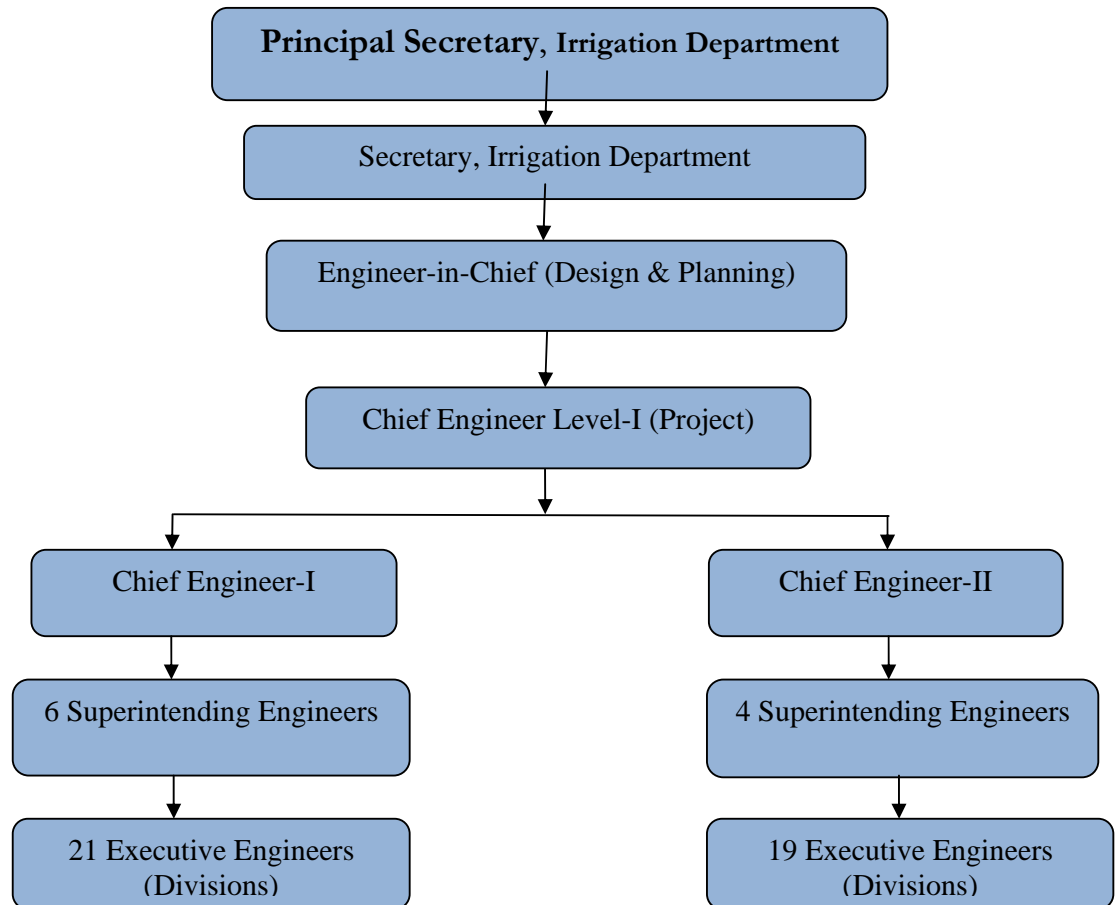
(Rupees in crore)

Sl. No.	Head of Account	Total Provision	Total Expenditure	Expenditure during March	Percentage of expenditure during the month of March to total expenditure
1	2203- Technical Education	174.80	148.84	78.09	52
2	2575- Other Special Area Programmes	75.00	53.70	28.70	53
3	2810- Non-Conventional Sources of Energy	25.22	12.62	8.61	68
4	2852- Industries	289.93	255.00	226.32	89
5	3425- Other Scientific Research	31.86	31.82	24.13	76
6	4055- Capital Outlay on Police	223.73	173.23	151.43	87
7	4058- Capital Outlay on Stationary and Printing	9.48	7.00	7.00	100
8	4070- Capital Outlay on Other Administrative Services	54.97	43.70	26.38	60
9	4210- Capital Outlay on Medical and Public Health	1,181.00	1,089.83	554.93	51
10	4215- Capital Outlay on Water Supply and Sanitation	106.12	80.14	51.00	64
11	4225- Capital Outlay on Welfare of Scheduled Castes, Schedule Tribes and Other Backward Classes	213.34	100.28	57.20	57
12	4235- Capital Outlay on Social Security and Welfare	5.50	5.56	3.16	57
13	4250- Capital Outlay on Other Social Services	49.33	39.96	31.11	78
14	4402- Capital Outlay on Soil and Water Conservation	8.92	8.91	8.91	100
15	4403- Capital Outlay on Animal Husbandry	100.17	47.34	44.91	95
16	4575- Capital Outlay on Other Special Areas Programme	870.00	689.50	537.31	78
17	4854- Capital Outlay on Cement and Non-Metallic Mineral Industries	0.00	3.02	3.02	100
18	4859- Capital Outlay on Telecommunication and Electronic Industries	40.50	12.98	9.12	70
19	5053- Capital Outlay on Civil Aviation	61.41	40.85	24.06	59
20	5452- Capital Outlay on Tourism	68.81	39.78	37.56	94
	Total	3,590.09	2,884.06	1,912.95	66

Appendix 3.1.1

(Reference: Paragraph 3.1.3; Page 47)

Organisational chart



Appendix – 3.1.2

(Reference: Paragraph: 3.1.7.2; page 49)

Statement showing break up of the increase in cost of the project
(Rupees in crore)

Revision of the project	Pre-revised cost	Revised cost	Escalation		
			Total	Due to increase in cost	Due to addition of new items of works
First revision (1985)	299.20	696.15	396.95	303.28	93.67
Second revision (1993)	696.15	1,256.00	559.85	482.96	76.89
Third revision (1999)	1,256.00	1,387.60	131.60	51.16	80.44
Fourth revision (2002)	1,387.60	1,579.32	191.72	166.95	24.77
Fifth revision (2006)	1,579.32	2,522.02	942.70	701.00	241.70
Total			2,222.82	1,705.35	517.47

Appendix -3.1.3

(Reference: Paragraph 3.1.9.1; page 53)

Details of physical target and achievement during 2003-08

Years	Land acquisition (hectare)		Canals				Drains			
			Construction of canal (km)		Masonry works (number)		Construction of drains (km)		Masonry works (number)	
	Target	Achievement (per cent)	Target	Achievement (per cent)	Target	Achievement (per cent)	Target	Achievement (per cent)	Target	Achievement (per cent)
1	2	3	4	5	6	7	8	9	10	11
2003-04	1645	851 (52)	980	372 (38)	1170	645 (55)	751	323 (43)	288	183 (64)
2004-05	2085	799 (38)	1095	285 (26)	1325	617 (47)	1015	673 (66)	455	416 (91)
2005-06	3139	1705 (54)	884	392 (44)	1357	716 (53)	960	366 (38)	396	285 (72)
2006-07	1335	630 (47)	956	521 (54)	2033	1234 (61)	178	20 (11)	395	184 (47)
2007-08	1400	504 (36)	770	266 (35)	1025	867 (85)	20	14 (70)	300	276 (92)
Total (per cent to total target)		4489 (76)	-	1836 (45)	-	4079 (75)		1396 (28)		1344 (53)

Appendix -3.1.4

(Reference: Paragraph 3.1.11; page 55)

Statement showing gaps in canals

Name of canal/length	Date of approval of alignment	Total land required (Hectare)	Present status						
			Land acquired (Hectare)	Land under negotiation (Hectare)	Gaps Referred to SLAO (Hectare)	Date of referral to SLAO	Number of existing gaps	Total length of gaps (Km)	Date of occurrence of gaps
1	2	3	4	5	6	7	8	9	
SNK-3, Bahraich									
Bhilaula Basanti Minor	29.03.06	10.470	0.615	9.855	Nil	Nil	1	5.300	March 2006
Kandela Minor	8.11.06	8.996	8.666	0.330	Nil	Nil	1	0.156	November 2006
Meerganj Minor	25.1.06	16.695	3.045	13.650	Nil	Nil	1	3.144	January 2006
Parsi Minor	5.2.07	13.860	Nil	13.860	Nil	Nil	1	4.797	February 2007
Dhawania Minor	5.2.07	7.663	0.560	7.103	Nil	Nil	1	2.750	February 2007
SNK-4, Bahraich									
Narottampur Minor	1.10.05	5.360	4.960	1.460	Nil	Nil	4	2.604	October 2005
Maodin Minor	12.8.05	10.452	8.431	2.089	Nil	Nil	11	1.081	August 2005
Manraj Ganj Minor	12.8.05	3.160	2.797	0.363	Nil	Nil	4	0.328	August 2005
Sisai Haider Minor	12.8.05	9.205	2.228	6.977	Nil	Nil	9	3.596	August 2005
Kirtanpur Minor	12.8.05	4.780	3.928	0.852	Nil	Nil	6	0.875	August 2005
Maroucha Minor	14.7.05	7.520	6.182	1.338	Nil	Nil	7	0.902	July 2005
Amri Dohalu Minor	2.7.05	10.116	5.894	4.222	Nil	Nil	7	2.225	July 2005
Saigaon Minor	1.10.5	12.551	11.371	1.180	Nil	Nil	6	0.602	October 2005
SNK-1, Gonda									
Devapasia Minor	1.12.02	10.000	9.502	0.498	Nil	Nil	1	0.200	December 2002
Kudiyani Minor	25.5.03	9.920	9.771	0.149	Nil	Nil	1	0.050	May 2003
Hardayapur Minor	18.6.99	18.500	17.926	0.574	Nil	Nil	1	0.100	June 1999
Karanpur Minor	3.5.04	4.500	4.196	0.304	Nil	Nil	2	0.640	May 2004
Chandpur Minor	16.12.04	8.800	6.769	2.031	Nil	Nil	1	0.700	December 2004
Gangrauli Borauli Minor	14.12.05	11.200	9.602	1.593	Nil		2	0.600	December 2004
Barauli Minor	2/06	6.400	5.902	0.498	Nil	Nil	2	0.200	February 2006
Ramgarh Minor	1/07	3.405	1.645	1.760	Nil	Nil	1	0.500	January 2007
Semna Minor	30.5.04	5.440	0.283	5.157	Nil	Nil	1	3.000	May 2004
Khamrauni Minor	10.1.03	17.498	13.460	4.038	Nil	Nil	1	2.140	January 2003
Belsar-I Minor	5.8.04	9.749	5.078	4.671	Nil	Nil	1	0.900	August 2004
Dhodepur Minor	24.2.03	11.497	10.347	1.150	Nil	Nil	1	0.050	February 2003
Punelila Minor	5.8.04	4.399	1.885	2.514	Nil	Nil	3	0.270	August 2004
Khajuri Nidhi Minor	5.8.04	9.674	8.269	1.405	Nil	Nil	2	0.610	August 2004
Dodawa Minor	30.11.05	5.196	1.926	3.270	Nil	Nil	1	2.600	November 2004
Sonauli Mohabalpur Minor	15.9.98	67.575	66.499	1.258	Nil	Nil	1	0.500	September 1998
Gangrauli Dy.	3.11.01	56.000	55.126	Nil	0.874	9/07	1	0.250	November 2001
Balmatthar Minor	15.7.05	17.000	13.217	3.383	Nil	Nil	2	1.605	July 2005
Dubai Minor	27.6.99	12.322	10.206	0.036	2.080	7/04	1	1.500	June 1999
Dhobaharam Minor	1.11.04	9.710	7.720	1.990	Nil	Nil	2	1.100	November 2004
Bhairampur Minor	29.9.04	4.480	3.841	1.639	Nil	Nil	1	0.320	September 2004
SNK-4, Gonda									
Sultana Minor	1998	12.830	12.420	0.410	Nil	Nil	1	0.300	June 1998
Shekhapur Minor	28.3.89	4.710	4.410	0.300	Nil	Nil	2	0.195	March 1989
Pratap pur Dy.	1999	36.260	35.800	0.460	Nil	Nil	3	0.475	June 1999
Parasiya Dy.	22.5.99	36.500	34.935	1.565	Nil	Nil	1	0.055	May 1999
Kaudiya Dy.	2001	23.150	22.620	0.530	Nil	Nil	1	0.070	June 2001
Rupaidih Minor	24.2.99	8.590	8.470	Nil	0.120	5/06	1	0.100	February 1999
Gausiha Minor	3.1.99	7.920	6.920	1.000	Nil	Nil	3	0.250	January 1999
Bichuri Minor	2.6.99	9.070	8.543	0.527	Nil	Nil	2	0.750	June 1999
Sahjanwa Minor	24.2.99	6.240	4.330	1.910	Nil	Nil	2	0.165	February 1999
Jagdishpur Minor	15.2.2000	11.820	11.391	0.429	Nil	Nil	1	0.175	February 2000
Rampur Minor	22.1.2000	4.410	4.076	0.334	Nil	nil	1	0.300	January 2000
Chhitauni Minor	15.1.04	6.200	3.845	2.355	Nil	nil	6	1.280	January 2004
Ithiatok Branch	1998	127.180	127.81	0.630	Nil	nil	1	0.100	June 1998

Audit Report (Civil) for the year ended 31 March 2008

Indrapura Minor	2001	20.860	18.444	2.416	Nil	nil	4	0.525	June 2001
Parasia Gudar	2003	7.724	7.528	0.196	Nil	nil	3	0.640	June 2003
Gyanapur Minor	2002	7.255	4.473	2.782	Nil	nil	1	0.150	June 2002
RamGadhiya	2005	7.100	5.890	1.210	Nil	nil	1	0.105	June 2005
Bhatpi Minor	2004	8.270	6.170	2.100	Nil	nil	3	2.375	June 2004
Gilauli Minor	1998	15.990	15.430	6.560	0.560	5/06	3	0.194	May 1998
Karma Minor	2005	11.920	10.642	1.273	Nil	nil	1	0.220	August 2005
Malari Minor	2006	11.652	8.172	3.460	Nil	nil	3	1.580	August 2006
Sandeshwa Minor	2006	8.328	4.839	3.489	Nil	nil	2	0.900	August 2006
Bishunpur Minor	2006	21.947	4.527	17.420	Nil	nil	3	1.073	June 2006
Bhatwalia Minor	2006	10.235	0.230	10.010	Nil	nil	1	3.412	June 2006
Farenda Shuka	2006	11.250	4.316	6.934	Nil	nil	3	0.510	August 2006
Virmapur Minor	1998	2.880	2.765	0.115	Nil	nil	1	0.700	October 1998
Parwaria Minor	1.9.04	19.690	18.164	1.526	Nil	nil	5	0.553	September 2004
Dhanepur Dy.	2001	44.950	42.870	0.445	1.635	nil	5	0.750	June 2001
Trilakpur Minor	18.12.01	16.430	15.742	0.688	Nil	nil	2	0.280	December 2001
Jaitapur Minor	2001	12.290	7.489	2.631	2.170	nil	2	1.566	December 2001
Presidheri Minor	15.5.02	11.970	10.331	1.639	Nil	nil	6	0.500	May 2002
Selchui Minor	2006	11.040	2.068	8.972	Nil	nil	1	4.030	May 2006
Ranigaon Minor	2005	7.417	3.380	4.037	Nil	nil	1	1.300	May 2005
Benipur Minor	2006	7.724	2.748	4.976	Nil	nil	1	1.800	July 2006
Ganeshpur Minor	10.4.01	29.690	28.696	0.994	Nil	nil	2	0.600	April 2001
Semrahi Mnior	25.2.01	11.490	8.431	3.059	Nil	nil	6	2.160	February 2001
SNK-5, Gonda									
Vishnupur Dy.	15.3.2000	20.000	15.800	4.200	Nil	Nil	1	2.050	March 2000
Bhadah Minor	15.10.01	18.000	14.500	3.500	Nil	Nil	1	1.750	October 2001
Gaurapur Minor	31.1.03	17.000	12.600	4.400	Nil	Nil	1	1.760	January 2003
Tilsa Dy.	11.10.99	18.000	16.950	1.050	Nil	Nil	2	0.900	October 1999
Kaithwalia Minor	1.12.2000	8.000	5.500	2.850	Nil	Nil	1	1.900	December 2000
Bharwalia Minor	5.12.99	20.000	18.925	1.075	Nil	Nil	1	0.400	December 1999
Kunaina Minor	15.1.2000	9.000	8.250	0.650	Nil	Nil	2	0.300	January 2000
Umooradin Dy.	11.10.99	24.000	22.500	1.500	Nil	Nil	2	0.900	October 1999
Bhuwandand Minor	6.12.2000	8.000	4.250	3.750	Nil	Nil	1	0.315	December 2000
Paprikala Minor	6.12.2000	4.500	4.250	0.250	Nil	Nil	1	0.156	December 2000
Changeera Mangeera Minor	6.12.2000	5.200	4.750	0.450	Nil	Nil	1	0.285	December 2000
Parsapur Minor	23.10.01	9.240	Nil	9.240	--	--	--	9.240	October 2001
Daulutar Minor	22.10.01	6.400	Nil	6.140	--	--	--	6.140	October 2001
Tikuia Minor	7.11.01	9.600	Nil	9.600	--	--	--	9.600	November 2001
Khamaria Minor	7.11.01	6.200	Nil	9.200	--	--	--	6.200	November 2001
Gopalpur Minor	22.10.01	6.800	Nil	6.800	--	--	--	6.800	October 2001
Baraad Minor	8.11.01	20.000	Nil	20.000	--	--	--	20.000	November 2001
Asanhara Minor	8.11.01	16.000	Nil	16.000	--	--	--	16.000	November 2001
Amanar Minor	8.11.01	6.800	Nil	6.800	--	--	--	6.800	November 2001
SNK, Faizabad									
Kuwagaon Minor	98-99	15.660	11.591	Nil	0.069		1	2.800	98-99
Khamaria Dy.	22.2.80	68.500	67.880	Nil	0.620	17.4.06	3	0.397	February 1980
Chaplawan Minor	30.7.97	10.800	10.166	0.100	0.534	14.8.06	2	0.234	July 1997
KadhavKalan Minor	20.7.01	18.300	7.900	0.308	2.092	17.4.06	5	1.300	July 2001
Kashipur Minor	30.5.88	6.800	5.940	Nil	0.040	17.4.06	4	0.360	May 1988
Jaggupur Minor	13.12.05	5.200	4.330	0.870	Nil	Nil	2	0.800	December 2005
Ranipur Minor	12.2.92	13.900	13.790	0.110	Nil	Nil	1	0.050	February 1992
Amodha Khas Mr	3.7.01	8.600	8.100	0.500	Nil	Nil	2	0.870	July 2001
Saifabad Minor	11/04	3.647	3.261	0.386	Nil	Nil	4	0.307	November 2004
Kusauri Minor	11/04	8.705	8.447	0.258	Nil	Nil	1	0.055	November 2004
Kamaria Minor	11/04	5.980	5.482	0.498	Nil	Nil	3	0.415	November 2004
Semra Minor	11/04	8.224	7.957	0.267	Nil	Nil	3	0.105	November 2004
Basantpur Minor	9/05	7.662	4.172	3.490	Nil	Nil	1	2.500	September 2005
Unjhi Minor	28.12.2000	9.275	8.560	0.469	0.246	9.3.07	5	2.530	December 2000
Rampur Minor	28.12.2000	6.400	6.116	0.140	0.144	13.10.06	2	0.420	December 2000
Anandpur Minor	3.7.01	5.876	5.334	0.238	0.304	9.3.07	6	0.420	July 2001
Badosar Minor	8.11.04	3.001	1.793	0.708	0.500	16.1.07	4	0.463	November 2004
Barsaw Minor	18.11.05	5.224	4.112	0.914	0.198	16.1.07	7	1.311	November 2005
Bhagwaria Minor	17.12.05	18.400	16.530	1.870	Nil		4	2.225	December 2005
SNK-I, Harriaya									
Nagar Dy.	31.11.99	58.425	40.350	18.075	Nil	Nil	27	7.633	November 1999
Kushmaur Minor	3/01	11.160	6.480	4.680	Nil	Nil	20	2.542	March 2001

Harriaya Dy.	8/02	82.950	52.640	30.310	Nil	Nil	41	5.861	August 2002
Jaipal pur Minor	2006	10.500	Nil	10.500	--	--	--	10.500	2006
Madan Minor	4/2002	12.020	Nil	12.020	Nil	Nil		12.020	April 2002
Mayna Minor	2002	5.748	2.757	2.991	Nil	Nil	4	0.710	2002
Newada Minor	2002	7.519	Nil	7.519	Nil	Nil		7.519	2002
Mahedev Minor	5/06	10.690	0.695	9.995	Nil	Nil	4	5.930	
SNK-6, Bahraich									
Dadaura Dy.	6.10.83	44.150	44.050	0.060	0.040	5.6.06	1	0.040	October 1983
Makaulia Minor	25.5.95	19.400	19.280	0.120	Nil	Nil	1	0.150	May 1995
Shahpur Kataulia Minor	15.8.04	20.030	19.144	0.886	Nil	Nil	1	0.328	August 2004
Dikra Minor	1.2.05	8.540	5.040	3.500	Nil	Nil	1	0.350	February 2005
Dubeykalan Minor	15.2.05	16.300	12.750	3.550	Nil		2	0.075	February 2005
Churaila Minor	22.2.92	1.680	10.320	Nil	1.560	5.5.06	4	0.150	February 1992
Vishunpur Rahu Minor	22.2.92	9.440	9.226	0.214	0.243	20.1.06	1	0.080	February 1992
SNK,Nanpara, Bahraich									
Chausar Rajwaha	1.1.2000	6.906	6.738	0.168	Nil	Nil	1	0.800	January 2000
Ranipur Minor	31.3.05	9.475	6.900	0.525	Nil	Nil	2	0.245	March 2005
Kochawa Minor	1.12.04	14.217	13.540	0.682	Nil	Nil	1	0.325	December 2004
Virwa Minor	18.12.04	9.095	9.220	0.672	Nil	Nil	4	1.020	December 2004
Rupaidiha Minor	1.1.06	8.145	7.779	0.346	Nil	Nil	3	0.165	January 2006
Mah Minor	2.8.06	8.644	8.245	0.399	Nil	Nil	2	0.190	August 2006
Duehasur Minor	12.3.05	10.167	9.957	0.210	Nil	Nil	1	0.100	March 2005
Janki Nagar Dy.	25.8.98	16.088	16.010	0.084	Nil	Nil	1	0.160	August 1998
Bhatpurwa Minor	1.10.02	14.090	13.250	0.840	Nil	Nil	1	0.400	October 1998
Chandanjot Minor	1.4.05	7.966	7.230	0.735	Nil	Nil	2	0.350	April 2005
Gauharia Minor	1.1.05	5.518	4.680	0.840	Nil	Nil	1	0.400	January 2005
Gauaura Minor	1.10.99	27.496	27.410	0.084	Nil	Nil	1	0.040	October 1999
Veereypur Minor	1.5.05	10.976	10.871	0.105	Nil	Nil	1	0.050	May 2005
SNK-1, Nanpara Bahraich									
Jeera Bhari Minor	8.7.05	10.580	9.110	0.678	0.792	26.8.06	2	0.870	July 2005
Payarkohna Minor	8.7.05	13.790	4.271	6.633	2.886	5.6.06	8	2.980	July 2005
Ramaupur Minor	14.7.05	7.959	5.055	2.904	Nil	Nil	4	0.828	July 2005
Maholi Khori	14.7.05	11.605	3.228	8.377	Nil	Nil	8	0.784	July 2005
Harigaon Minor	14.7.05	21.700	10.543	11.157	Nil	Nil	11	2.020	July 2005
Nagpur Minor	14.7.05	10.430	8.851	1.623	Nil	Nil	2	2.380	July 2005
Total		2076.196	1581.847	472.642	21.707		409	251.788	

Total cases under negotiation: 388

Total cases with the SLAOs: 21

409

Appendix -3.1.5

(Reference: Paragraph 3.1.15.2; page 59)

Details of quality checking of work during 2006-08

Name of division to which work pertained	Number of works executed	Number of agreements forwarded to QCD (per cent to column 2)	Details of checking by QCD	
			No. of samples	samples found deficient (per cent to column 4)
1	2	3	4	5
SNK, Faizabad	207	116 (56)	266	10 (4)
SNK, 1 Gonda	353	1	5	Nil
SNK, Nanpara	378	39 (10)	71	Nil
SNK-1, Nanpara	60	2 (3)	15	8 (53)
SNK-4, Bahraich	200	1	4	2 (50)
SNK-5, Gonda	402	14 (3)	16	Nil
Total	1600	173 (11)	377	20 (6)

Appendix 3.1.6

(Reference: Paragraph 3.1.17.2; Page 60)

Statement showing outstanding advances against
Contractors/Suppliers/Other Divisions

(Rs. in crore)

Sl. No.	Name of division	Advances to Contractors/ suppliers		Advances to Other Divisions		Periods
		Numbers	Amount	Numbers	Amount	
1	2	3	4	5	6	7
1.	Saryu Nahar Khand -3, Bahraich	32	0.47	42	0.45	July 1981 to March 2007
2.	Saryu Nahar Khand-8, Bahraich	31	0.17	14	0.23	October 1986 to March 1995
3.	Saryu Nahar Khand-4, Bahraich	20	0.45	12	0.66	March 1982 to March 2003
4.	Saryu Drainage Khand-1, Bahraich	8	0.02	35	1.19	March 2003 to March 2007
5.	Saryu Nahar Khand -1, Harraiya, Basti	-	-	1	0.05	October 2001
6.	Saryu Nahar Khand, Faizabad	13	0.03	24	0.19	August 1998 to February 2005
7.	Saryu Nahar Khand, Nanpara, Bahraich	62	0.10	33	0.20	February 1978 to June 2005
8.	Saryu Nahar Khand-6, Bahraich	34	0.03	31	0.69	May 1981 to August 2006
9.	Saryu Nahar Khand-5, Gonda	14	0.61	17	0.39	March 1999 to May 2007
10.	Saryu Nahar Khand-1, Gonda	23	0.81	25	0.24	April 1981 to October 2005
11.	Saryu Nahar Khand-4, Gonda	35	1.01	29	0.66	December 1986 to September 2007
	Total	272	3.70	263	4.95	

Total unadjusted advances (Column 4 + Column 6) - Rs. 8.65 crore

Appendix -3.1.7

(Reference: Paragraph 3.1.17.3; Page 60)

Statement showing outstanding temporary advances against departmental officers

(Rs. in crore)

Sl. No	Name of division	Number of employees involved	Amount of unadjusted advance	Period of advance
1	2	3	4	5
1.	Saryu Nahar Khand-3, Bahraich	32	0.18	March 1989 to December 2007
2.	Saryu Nahar Khand-8, Bahraich	28	0.10	June 1988 to July 1993
3.	Saryu Nahar Khand-4, Bahraich	25	0.06	February 1980 to March 2008
4.	Saryu Drainage Khand-1, Bahraich	20	0.07	1998 to January 2008
5.	Saryu Nahar Khand-1, Harraiya, Basti	7	0.04	November 2002 to June 2007
6.	Saryu Nahar Khand, Faizabad	5	0.02	August 2007 to March 2008
7.	Saryu Nahar Khand, Nanpara, Bahraich	18	0.16	November 1996 to January 2006
8.	Saryu Nahar Khand-6, Bahraich	22	0.17	March 1983 to March 2007
9.	Saryu Nahar Khand-5, Gonda	44	0.22	December 1997 to October 2007
10.	Saryu Nahar Khand-1, Gonda	33	0.16	February 1983 to March 2008
11.	Saryu Nahar Khand-4, Gonda	29	0.14	September 1978 to May 2008
12.	Quality Control Division, Gonda	10	0.01	October 1996 to January 2003
Total		273	1.33	

Appendix 3.2.1

(Reference: Paragraph 3.2.6; Page 64)

Selected Districts, Blocks and Gram Panchayats

Sl. No.	District	Name of Blocks	Name of GPs
1.	Sitapur	Biswa, Laharpur, Machhrehta, Mishrikh	Pipari Benisingh, Banni Rai, Haibatpur, Shankarpur, Ganeshpur Newada, Raipurganj, Basantipur, Rangawa, Baniamau, Rajpur Pratap, Rajagaon, Kaduapur, Ramuapur, Sahadatnagar, Sarsai, Binaura.
2.	Lakhimpur	Bakeganj, Behjam, Bijuva, Lakimpur,	Babarpur, Mahuraina, Tendua, Grant No.- 10, Acchaniya, Basara, Raipur Bujurga, Amghat, Bheera, Rahimnagar Grant, Bagia Khera, Belwa malookapur, Jamaitha, Saidapur Deokali, Karanpur Nibaha, Gopalpur.
3.	Hamirpur	Gohand, Maudha, Rath, Sumerpur.	Dhanauri, Masgaon, Sarsai, Alkachawa, Artara, Ladar, Biharka, Bhamaura, Sargaon, Atraulia Rath, Tola Khagaran, Kurra, Dariapur, Chandrapurva Bujurga, Tedha, Kumahupur.
4.	Fatehpur	Airaya, Bahuva, Deomai, Vijapur.	Airaya Sadat, Allipur, Purain, Sahajadpur Khaga, Pamrauli, Rampur Barwat, Bawan, Sujanpur alias Bahua Dehat, Bhasauli, Paharipur, Mirzapur Makrandpur, Musafa, Dariamau, Garaha, Gurgaula, Laukiapur.
5.	Gonda	Belsar, Haldharmau, Jhanjhari Parasapur,	Barauli, Pakwangaon, Niyava, Taradeeh, Rovari, Gonava, Maizapur, Bhulbhuliya, Khorhansa, Kastua, Keshavpur Paharva, Soniharlal, Narayapur Mardan, Pyoli, Dubai, Domakalpi.
6.	Siddarthnagar	Bansi, Bhanawapur, Khuniao, Mithwal,	Nawaila, Chetiya, Ekdegwa, Mau (S), Trilokpur, Mahanuakhas, Taraw, Khurpahawa, Bagahawa, Sanichara, Kalwari Nankaar, Madwapur Kala, Neusa, Bhatijawapur, Danokuia, Jeeva.
7.	Unnao	Bangarmau, Hasan ganj Hilauli, Purva	Sherpurkala, Murtazapur, Mau, Marapur, Kherva Aladadpur, Kodra Lakhaura, Barakhera, Nawai, Baravakala, Para, Kardaha, Baraula, Unchgaon sani, Banigaon, Unchgaon Kila, Tripurarapur
8.	Pratapgarh	Baba Belkhar Nath Dham, Bihar, Lalganj, Patti	Amarpur, Jogipur Jaisingh Garh, Payagpur, Aurista, Belha, Sarai Janmati, Bhadrakala, Madhukarpur, Sarai Mahasingh, Bhitipure nain, Bhav, Raipur Bahuta, Raipur, Sarsatpur, Dhanshar.
9.	Chandauli	Barhani, Dhanapur Niyamatabad, Sakaldeeha	Rewasa, Pareva, Mudda, Amara, Sakrari, Premashrya, Silota, Vijapur Fattepur, Barhuli, Gauri, Zalilpur, Ibrahimipur, Barathi, Dighwat, Bhawalpur.
Total	09	36	144

Appendix 3.2.2

(Reference: Paragraph 3.2.9.1; Page 68)

**Details of employment generation, works taken up in the selected Gram Panchayats
2006-07**

District	Name of Blocks	Name of GPs	Reg. H/H	Mandays Projected	Mandays Generated	Average Mandays Generated per H/H	H/H with 100 Mandays Generated	Total Works as per annual plan	Works undertaken	
Sitapur	Mishrikh	Sarsai	187	10515	634	3	-	6	1	
		Ramuapur	223	8966	3704	17	NIL	5	4	
		Sahadatnagar	-	28980	700	-	-	24	1	
	Machhrehta	Binaura	20	30996	1542	77	NIL	15	2	
		Kaduapur	122	17738	712	6	NIL	9	5	
		Rajagaon	154	--	1189	8	03		13	
		Baniamau	142	26728	2882	20	NIL	5	6	
		Rajpur Pratap	173	--	738	4	--		8	
		Bishwan	Haibatpur	265	10459	3932	15	NIL	13	2
	Laharpur	Bishwan	Pipari Benisingh	184	-	2316	13	--	--	2
			Shankarpur	457	-	1662	4	--	--	1
			Banni Rai	327	17250	149	0	--	9	1
			Ganeshpur Newada	197	5581	2443	12	-	7	2
			Raipurganj	290	-	456	2	NIL	-	2
			Rangawa	168	12572	4109	24	--	14	5
Basantipur			180	13414	4190	23	--	14	5	
Lakhimpur	Behjam	Basara	274	15667	1824	7	--	9	4	
		Raipur Bujurga	--	--	--	--	--	--	--	
		Acchaniya	306	9359	1628	5	NIL	10	2	
	Lakhimpur	Amghat	149	14242	841	6	NIL	17	2	
		Karanpur Nibaha	296	--	2500	8	4	--	3	
		Jamitha	129	--	996	8	NIL	--	3	
		Saidapur Deokali	319	--	3735	12	25	--	7	
	Bakeganj	Gopalpur	92	--	1055	11	NIL	--	2	
		Babarpur	143	12333	3284	23	NIL	23	5	
		Tendua	174	21575	310	2	--	17	2	
Mahuraina		315	23840	2048	7	NIL	32	4		
Grant No. 10		1116	46008	5998	5	NIL	58	12		

	Bijuva	Bagia Khera	153	43230	2094	14	NIL	95	3
		Belwa Malukapur	100	35085	1799	18	NIL	53	8
		Bheera	315	23619	3532	11	NIL	61	9
		Rahimnagar Grant	165	21472	4577	28	05	36	6
Hamirpur	Sumerpur	Dariapur	161	10994	10639	66	75	6	3
		Chandrapurwa Bujurga	328	21527	13200	40	54	16	5
		Tedha	604	6529	2039	3	--	17	2
		Kumahapur	172	27211	1946	11	1	44	4
	Maudaha	Artara	437	57187	9549	22	13	7	3
		Bhamaura	184	40973	1826	10	--	40	2
		Ladar	93	--	2712	29	NIL	--	3
		Biharka	311	37377	3071	10	--	7	3
	Rath	Sargaon	218	43675	4165	19	6	9	4
		Kurara	486	92237	39717	82	131	11	9
		Aataraulia Rath	123	26549	5740	47	--	7	6
		Tola Khagaran	302	23050	7970	26	--	8	8
	Gohand	Masgaon	418	21502	10031	24	75	5	2
		Dhanauri	94	4444	1491	16	NIL	6	4
		Sarsai	182	16868	4704	26	NIL	6	5
		Alkachawa	219	28029	4599	21	NIL	10	4
Fatehpur	Airaya	Purain	170	84964	11293	66	15	29	3
		Shahjadpur Khaga	319	--	4820	15	NIL	--	3
		Airaya Sadat	188	--	5607	30	--	--	4
		Allipur	374	61222	24293	65	NIL	12	5
	Vijaiapur	Garaha	752	15730	1989	3	NIL	20	1
		Dariamau	282	25900	8240	29	NIL	17	2
		Laukiapur	125	21150	8160	65	NIL	9	4
		Gurgaola	206	20480	12499	61	--	12	5
	Bahuva	Pamrauli	146	8480	835	6	NIL	4	1
		Rampur Barwat	153	5740	3392	22	NIL	2	2
		Bahua Dehat (Sujanpur)	255	8000	2323	9	--	5	1
		Bawan	76	83197	8852	116	NIL	15	3
	Deomai	Musafa	327	6460	2763	8	NIL	14	4
		Mirzapur Makrandpur	230	31400	3338	15	NIL	13	2
		Paharipur	194	22326	10473	54	31	27	13
		Bhaisauli	356	7531	7644	21	--	6	4

Audit Report (Civil) for the year ended 31 March 2008

Unnao	Bangarmau	Mau	92	--	823	9	NIL	--	3
		Sherpurkala	208	--	4165	20	--	--	6
		Murtazapur	118	7018	2724	23	--	10	4
		Marapur	150	8849	881	6	NIL	12	5
	Purva	Banigaon	275	8173	4808	17	NIL	5	2
		Tripurarpur	140	8857	3049	22	12	6	3
		Unchgaon Kila	114	20338	1717	15	NIL	5	4
		Unchgaon sani	149	9146	2739	18	NIL	5	4
	Hilauli	Kardaha	160	--	1919	12	NIL	--	3
		Baraula	138	--	4177	30	--	--	6
		Baravakala	90	9915	984	11	--	4	3
		Para	415	--	1033	2	--	--	3
	Hasanganj	Nawai	143	12355	5335	37	--	6	6
		Barakhera	145	9220	3528	24	NIL	6	5
		Kodra Lakhaura	238	12237	5405	23	--	7	3
		Kherva Aladadpur	120	--	2420	20	NIL	--	2
Pratapgarh	Bihar	Raipur	144	7006	1602	11	NIL	5	2
		Bhitipure nain	50	--	--	--	--	--	--
		Sarai Mahasingh	106	5029	1017	10	NIL	5	2
		Bhav	50	--	386	8	--	--	1
	Lalganj	Belha	178	--	3139	18	--	--	5
		Sarai Janmati	162	--	2200	14	--	--	2
		Madhukarpur	325	--	3909	12	NIL	--	2
		Bhadarikala	325	775	2156	7	--	4	4
	Patti	Sarsatpur	87	7313	1396	16	NIL	4	3
		Dhanshar	86	--	442	5	NIL	--	4
		Raipur	101	--	4222	42	NIL	--	3
		Bahuta	--	--	670	--	--	--	3
	B Belkhar Nath Dham	Amarpur	50	--	1044	21	3	--	3
		Jaisingh Garh	63	3170	1479	23	NIL	2	1
		Jogipur	69	--	750	11	NIL	--	2
		Payagpur Aurista	85	6122	531	6	NIL	14	6
Chandauli	Dhanapur	Sakrari	68	8711	5050	74	--	11	8
		Vijaipur	70	6845	4641	66	10	7	7
		Silota	62	8332	3439	55	NIL	7	2
		Premashrya	213	7954	3039	14	NIL	5	2
	Sakaldeeha	Barathi	125	4192	3171	25	NIL	8	7

		Ibrahimpur	117	11408	4613	39	--	27	18
		Bhawalpur	110	10023	4292	39	NIL	10	4
		Dighwat	178	19655	1052	6	NIL	4	2
	Niyamatabad	Zalilpur	31	2950	853	28	NIL	7	4
		Gauri	117	--	2870	25	27	--	4
		Fattepur	375	--	574	2	NIL	--	3
		Barhuli	156	9822	3790	24	NIL	10	4
	Barahani	Amara	242	--	3351	14	--	--	10
		Mudda	--	--	4194	--	--	--	8
		Rewasa	170	--	3261	19	NIL	--	6
		Pareva	140	--	2355	17	NIL	--	2
	Total		22370	1535776	428694	19	490	1112	452

Details of employment generation, works taken up in the selected Gram Panchayats

2007-08

District	Name of Blocks	Name of GPs	Reg. H/H	Mandays Projected	Mandays Generated	Average Mandays Generated per H/H	H/H with 100 Mandays Generated	Total Works as per annual plan	Works undertaken
Sitapur	Mishrikh	Sarsai	240	41867	1218	5	--	13	1
		Ramuapur	235	32902	526	2	NIL	21	2
		Sahadatnagar	450	--	913	2	--	--	1
	Machhrehta	Binaura	161	22725	NIL	NIL	NIL	16	NIL
		Kaduapur	210	10293	1108	5	NIL	13	6
		Rajagaon	165	58006	8703	53	--	45	5
	Bishwan	Baniamau	142	33797	153	1	NIL	18	2
		Rajpur Pratap	173	65280	3935	23	--	56	4
		Haibatpur	265	45546	292	1	NIL	26	2
		Pipari Benisingh	249	30395	416	2	NIL	33	2
		Shankarpur	457	25725	917	2	--	26	1
		Banni Rai	350	45547	4079	12	--	53	4

Audit Report (Civil) for the year ended 31 March 2008

	Laharpur	Ganeshpur Newada	204	--	NIL	--	--		NIL
		Raipurganj	345	-	603	2	NIL	--	6
		Rangawa	251	20045	2074	8	--	31	9
		Basantipur	200	29670	728	4	--	25	6
Lakhimpur	Behjam	Basara	302	15987	1700	6	--	16	4
		Raipur Bujurga	393	1875	507	1	NIL	13	2
		Acchaniya	306	19988	1857	6	NIL	27	6
		Amghat	305	20213	1141	4	--	16	5
	Lakhimpur	Karanpur Nibaha	309	19650	37	0	NIL	22	1
		Jamitha	129	22399	2101	16	NIL	11	4
		Saidapur Deokali	356	--	NIL	NIL	NIL	--	NIL
		Gopalpur	92	18612	468	5	NIL	7	2
	Bakeganj	Babarpur	313	--	1804	6	NIL	--	3
		Tendua	203	19474	2548	13	NIL	13	3
		Mahuraina	315	20313	3257	10	NIL	17	9
		Grant No. 10	1216	43265	8944	7	NIL	30	15
	Bijuva	Bagia Khera	154	52766	NIL	NIL	NIL	48	NIL
		Belwa Malukapur	174	73561	NIL	NIL	--	32	NIL
		Bheera	315	75066	2129	7	NIL	52	3
		Rahimnagar Grant	231	53213	1600	7	NIL	64	2
Hamirpur	Sumerpur	Dariapur	296	27528	8126	27	NIL	14	5
		Chandrapurwa Bujurga	468	27715	18782	40	24	11	9
		Tedha	976	80562	4881	5	--	20	5
		Kumahapur	523	30022	2114	4	2	18	4
	Maudaha	Artara	606	45865	5400	9	4	7	3
		Bhamaura	215	44518	7519	35	5	36	5
		Ladar	208	--	4178	20	14	--	4
		Biharka	311	--	6754	22	--	--	2

	Rath	Sargaon	252	27931	6300	25	26	12	1
		Kurara	532	47750	9251	17	NIL	21	4
		Aataraulia Rath	200	77926	876	4	--	9	2
		Tola Khagaran	365	24750	9069	25	NIL	6	2
	Gohand	Masgaon	344	35545	17059	50	82	6	5
		Dhanauri	363	49345	2723	8	NIL	5	1
		Sarsai	200	32470	3585	18	NIL	5	2
		Alkachawa	345	18720	13437	39	23	5	3
Fatehpur	Airaya	Purain	305	62653	5717	19	12	41	3
		Shahjadpur Khaga	380	--	18985	50	--	--	7
		Airaya Sadat	188	--	6522	35	--	--	5
		Allipur	377	43834	3310	9	NIL	29	2
	Vijaipur	Garaha	1231	96600	4931	4	NIL	40	3
		Dariamau	282	100596	3319	12	--	54	3
		Laukiapur	260	33243	4197	16	--	22	1
		Gurgaola	206	20256	NIL	NIL	--	14	NIL
	Bahuva	Pamrauli	146	29166	1631	11	NIL	30	3
		Rampur Barwat	179	95380	417	2	NIL	38	2
		Bahua Dehat (Sujanpur)	255	29700	NIL	NIL	--	20	NIL
		Bawan	86	61534	611	7	NIL	27	1
	Deomai	Musafa	407	34322	9189	23	1	29	3
		Mirzapur Makrandpur	270	29597	8392	31	NIL	31	5
		Paharipur	202	8638	8282	41	36	8	6
		Bhaisauli	388	32708	4012	10	NIL	19	3
Gonda	Haldharmau	Maizapur	54	3401	1030	19	NIL	8	2
		Bhulbhuliya	55	8817	2440	44	NIL	7	3
		Gonava	83	16531	2902	35	NIL	10	4
		Rovari	177	6982	4535	26	NIL	5	3

Audit Report (Civil) for the year ended 31 March 2008

	Paraspur	Domakalpi	70	--	826	12	NIL	--	1
		Narayanpur Mardan	82	--	1001	12	1	--	2
		Dubai	41	--	511	12	NIL	--	3
		Pyoli	25	--	203	8	NIL	--	2
	Belsar	Pakwangaon	153	5912	4763	31	--	6	6
		Niyawa	82	10780	3802	46	--	12	3
		Taradeeha	74	11235	3016	41	NIL	7	2
		Barauli	317	13714	6461	20	4	9	2
	Jhanjhari	Kastua	82	--	4051	49	15	--	7
		Khorhansa	81	--	3815	47	--	--	3
		Keshawapur Paharwa	70	--	1497	21	--	--	1
		Soni Harlal	85	--	4205	49	NIL	--	7
Siddarthnagar	Mithwal	Neusa	110	9250	577	5	NIL	11	1
		Bhatijawapur	39	--	906	23	8	--	3
		Danokuia	83	6675	1458	18	NIL	11	1
		Jeeva	98	6550	648	7	NIL	12	2
	Khuniao	Sanichara	168	17596	970	6	NIL	17	2
		Bagahawa	58	12873	151	3	NIL	15	1
		Kalwari Nankar	165	--	239	1	NIL	--	1
		Madhawapur Kala	227	7889	151	1	NIL	12	1
	Bansi	Nawaila	94	--	1456	15	NIL	--	2
		Mau (S)	246	12602	989	4	--	20	2
		Chetiya	183	--	1302	7	NIL	--	2
		Ekdegwa	176	15430	347	2	NIL	11	2
	Bhanawapur	Tarawa	72	5861	520	7	NIL	6	1
		Khurpahawa	52	19113	168	3	NIL	22	1
		Mahanua Khas	65	10260	447	7	NIL	14	1
		Trilokpur	98	9775	333	3	NIL	15	1

Unnao	Bangarmau	Mau	135	18536	323	2	NIL	15	2
		Sherpurkala	305	--	6300	21	NIL	--	3
		Murtazapur	171	20328	1579	9	NIL	22	8
		Marapur	270	11930	2480	9	--	14	5
	Purva	Banigaon	275	30895	1680	6	NIL	38	5
		Tripurarpur	385	29308	6310	16	--	17	6
		Unchgaon Kila	293	35585	7601	26	NIL	16	5
		Unchgaon sani	167	25778	2021	12	NIL	16	4
	Hilauli	Kardaha	222	22746	3330	15	--	14	4
		Baraula	264	37086	3714	14	NIL	19	7
		Baravakala	175	24596	3904	22	--	9	3
		Para	670	21483	9617	14	NIL	11	4
	Hasanganj	Nawai	143	26588	805	6	NIL	13	2
		Barakhera	225	22194	3324	15	20	20	5
		Kodra Lakhaura	277	30535	5590	20	--	20	5
		Kherva Aladadpur	141	32100	3725	26	NIL	19	3
Pratapgarh	Bihar	Raipur	145	--	4375	30	NIL	--	6
		Bhitipure nain	160	--	6185	39	NIL	--	3
		Sarai Mahasingh	179	--	2420	14	NIL	--	3
		Bhav	173	--	3490	20	--	--	1
	Lalganj	Belha	359	13824	7410	21	24	8	6
		Sarai Janmati	162	--	9082	56	20	--	8
		Madhukarpur	360	--	13676	38	18	--	16
		Bhadarikala	256	7026	4870	19	--	9	4
	Patti	Sarsatpur	89	22232	1981	22	NIL	31	1
		Dhanshar	159	20134	6224	39	27	23	3
		Raipur	128	19432	721	6	4	31	1
		Bahuta	274	--	5974	22	40	--	5

Audit Report (Civil) for the year ended 31 March 2008

	B Belkhar Nath Dham	Amarpur	50	--	4208	84	11	--	4
		Jaisingh Garh	132	27312	5751	44	25	16	2
		Jogipur	147	--	2549	17	NIL	--	2
		Payagpur Aurista	143	12480	1586	11	NIL	15	3
Chandauli	Dhanapur	Sakrari	69	19468	3395	49	NIL	27	9
		Vijaipur	77	21502	4749	62	--	15	6
		Silota	148	22746	2081	14	NIL	33	2
		Premashrya	145	23285	5240	36	NIL	23	7
	Sakaldeeha	Barathi	199	36890	4418	22	10	39	10
		Ibrahimpur	310	22900	1462	5	--	25	8
		Bhawalpur	219	22872	1806	8	6	38	6
		Dighwat	310	24440	4413	14	15	19	7
	Niyamatabad	Zalilpur	43	2200	1082	25	NIL	7	5
		Gauri	190	--	7277	38	21	--	6
		Fattepur	375	12754	1639	4	NIL	25	11
		Barhuli	216	21395	6179	29	NIL	39	7
	Barahani	Amara	242	33026	3785	16	9	29	6
		Mudda	225	--	2641	12	--	--	8
		Rewasa	215	20860	5615	26	NIL	29	11
		Pareva	247	--	5780	23	NIL	--	3
Total			34305	3174766	513414	15	507	2295	540

Appendix – 3.2.3

(Reference: Paragraphs: 3.2.11.2; page 71)

Details of payment to same labourers at different work sites during the same period

Name of implementing agency	Name of work	No. of labourers	No. of mandays overlapped	Details of double payment		
				Period	Rate	Amount
GP, Shahjad pur Khaga, Block – Airayan, Fatehpur district	Bandi talab excavation	29	160	12.10.07 to 18.10.07 17.10.07 to 23.10.07 19.10.07 to 25.10.07 24.10.07 to 30.10.07	100	16000
IP, Airayan, Fatehpur district	Soil work from Budwan to Bade tara	01	12	04.02.07 to 24.02.07	58	696
IP, Airayan, Fatehpur district	Kharanja – Budwan road to kudke Purva			10.02.07 to 23.02.07		
IP, Airayan, Fatehpur district	Soil /Kharanja work- Budhwan road to Bade tara	01	10	05.03.07 to 11.03.07 05.03.07 to 14.03.07 12.03.07 to 15.03.07	58	580
IP, Airayan, Fatehpur district	Kamala Balika Inter College to railway station, CC road	01	01	16.03.07 to 23.03.07	58	58
GP, Shahjad pur Khaga, Block – Airayan, Fatehpur district	Jakipur dari talab excavation			20.03.07 to 26.03.07		
E.E., Lower Gang Canal Fatehpur	Silt clearance of Yadgarpur minor	01	28	24.11.06 to 24.12.06	58	1624
	1. Silt clearance of Gauri Dy. 2. Excavation of Nala in GP Jarara, Block Deomai.	13	46	08.12.06 to 21.12.06	58	2668
EE, Sharda Sahyak Khand – 51, Distt. Pratapgarh.	Silt Clearance of 1 Raiya minor 2. Asuhi minor	48	297	15.11.06 to 05.12.06	58	17226
Intermediate Panchayat Hilauli, Unnao.	A. Connecting road - Basant Khera to Basanti devi	22	271	02.06.07 to 15.06.07	58	15718
	B. Connecting road -Ahesa road to Baldi Khera via Balsingh Khera					
	Connecting road - Gauri bridge to Ganga Khera	50	554	16.05.07 to 30.05.07	58	32132
Divisional Forest Officer, Ramnagar,	Soil work in GP, Majhagai of Naugarh block, Chandauli district	4	24	17.03.08 to 23.03.08	100	2400
EE., PWD CD-II Gonda	Connecting road executed by PWD CD – II. Gonda.	22	152	16.12.07 to 24.12.07	100	15200
GP Bhulbhulia, Block Haldharmau, Gonda	Plantation in GP, Bhulbhulia of Haldharmau block, Gonda district					
EE., PWD CD-II Gonda	Connecting road – Sonauli Mohamd pur in Belsar Block	02	30	16.12.07 to 15.01.08	100	3000
GP Barauli, Block Belsar, Gonda district	Excavation of pond					
Total		194	1585			107302